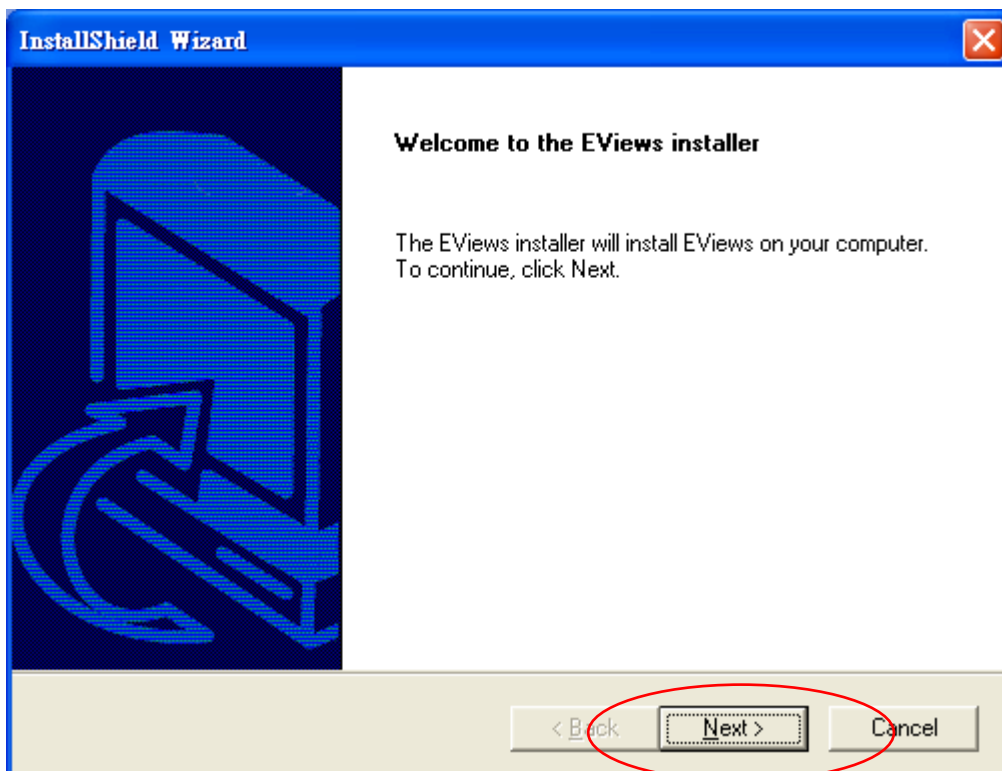
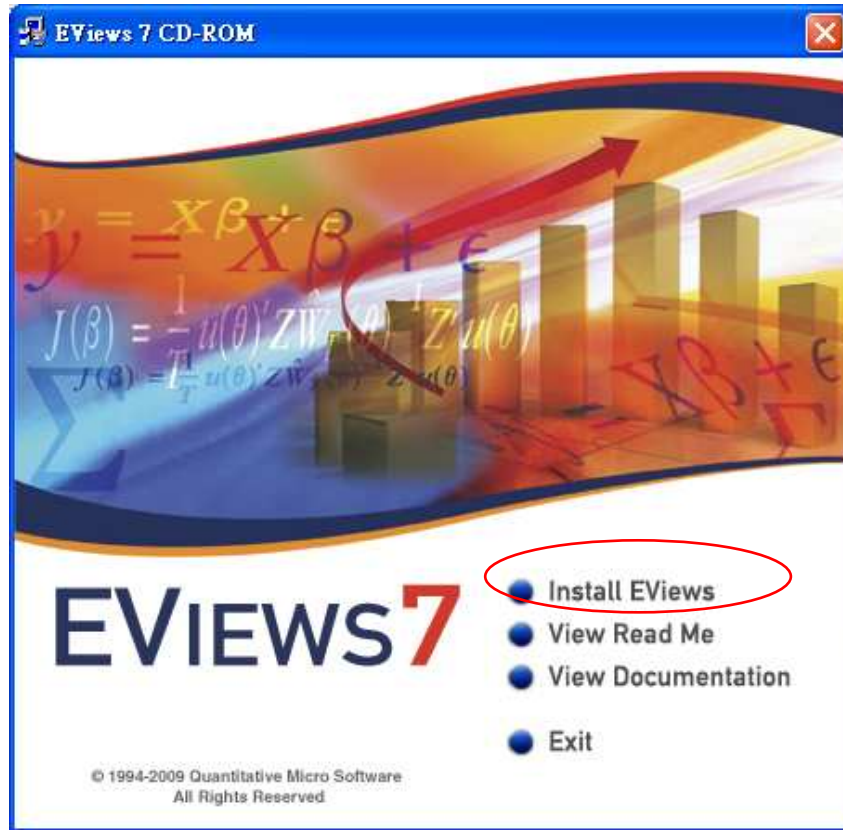
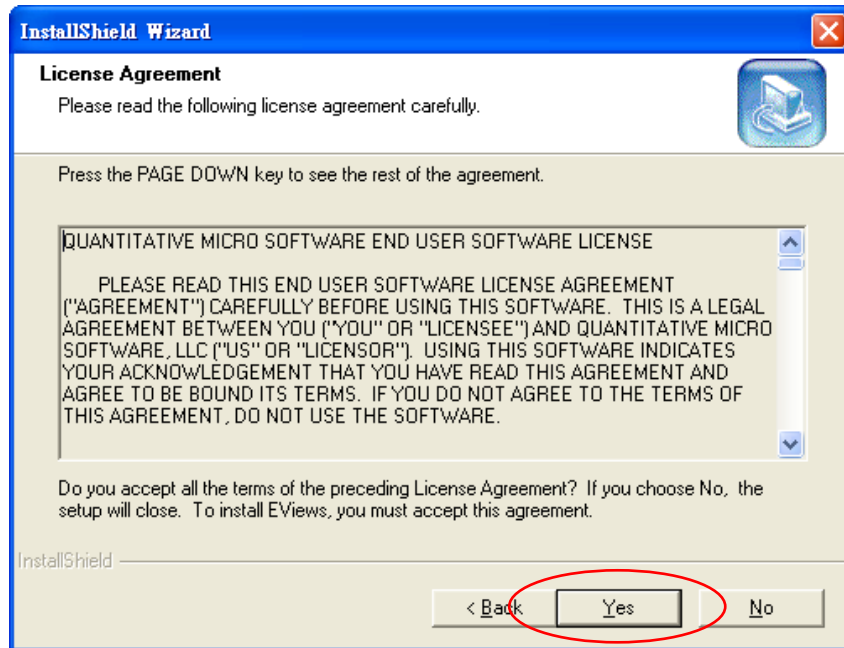


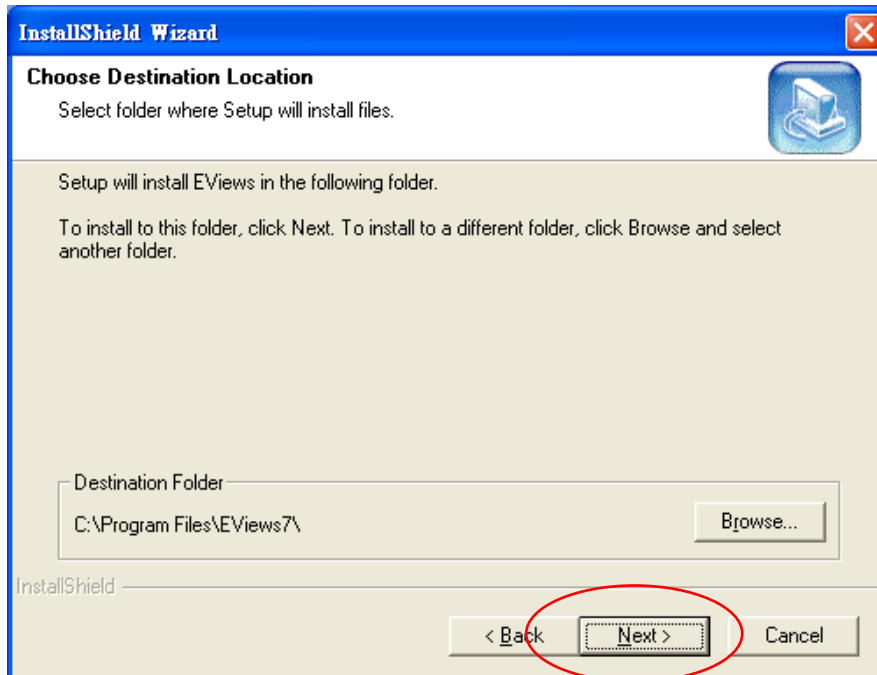
EViews 7 Demo License 安裝指南

放入 CD 後自動執行，選取 Install EViews

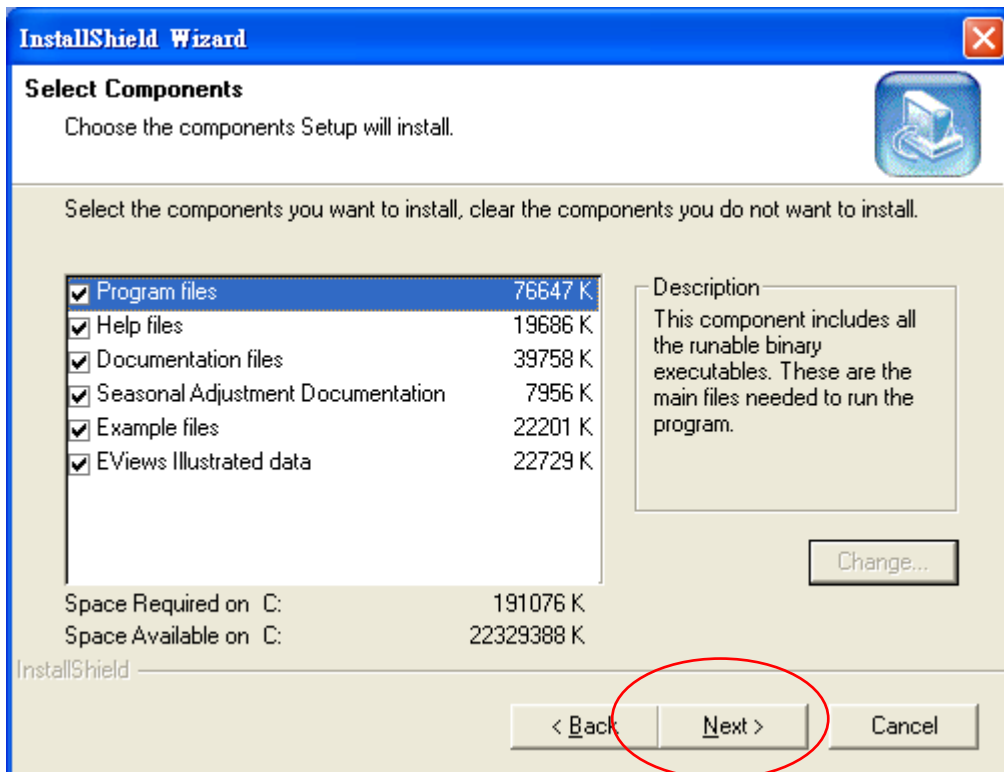
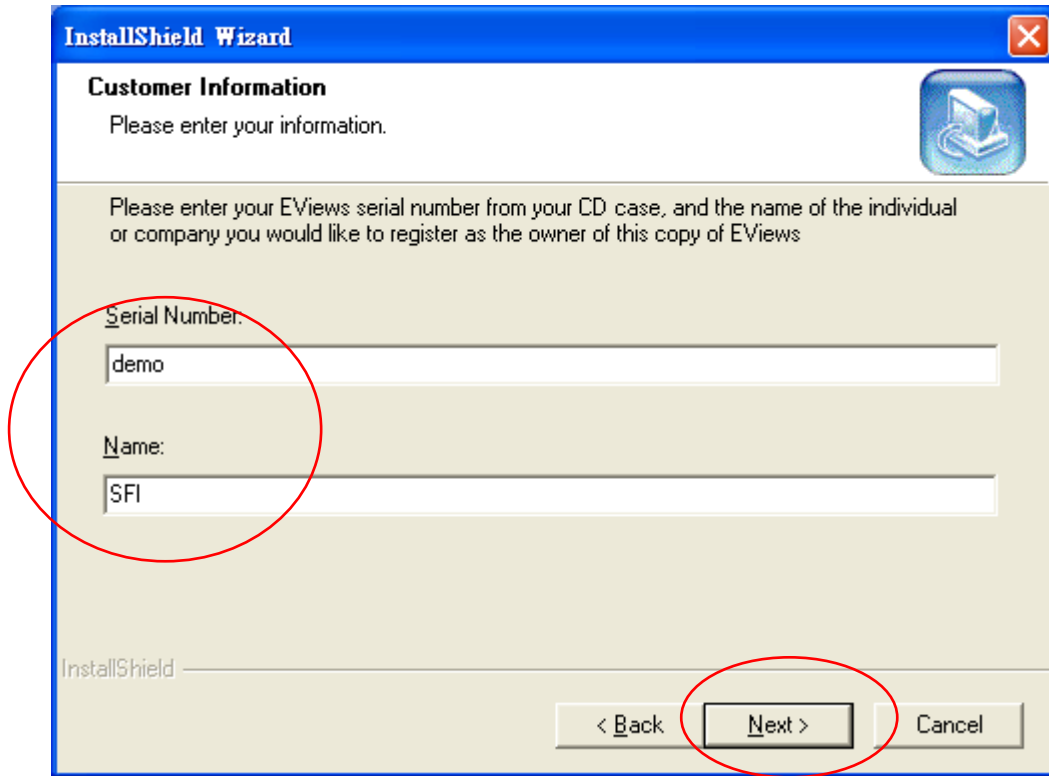


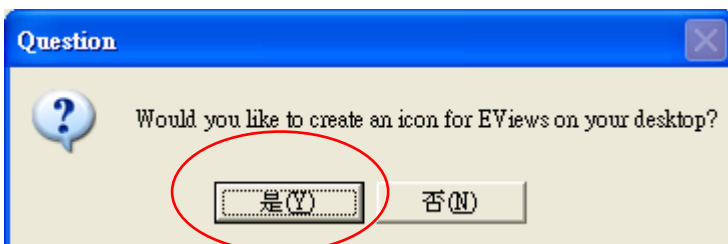
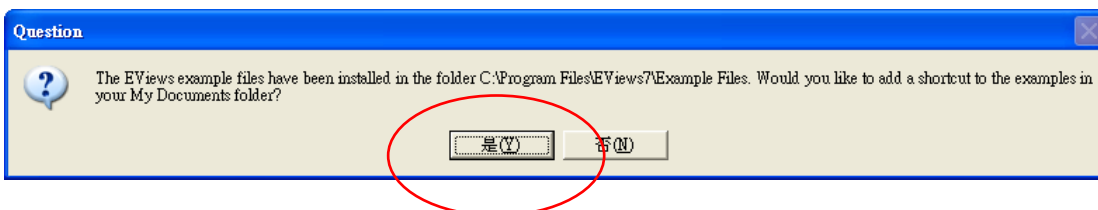
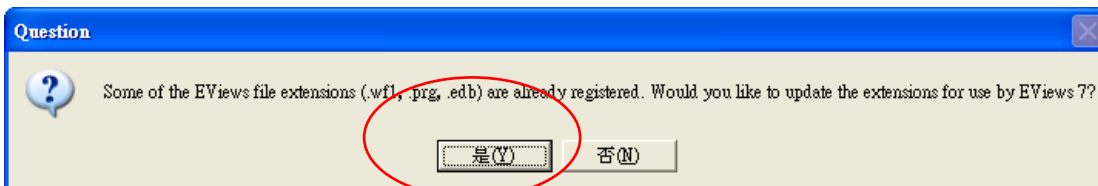
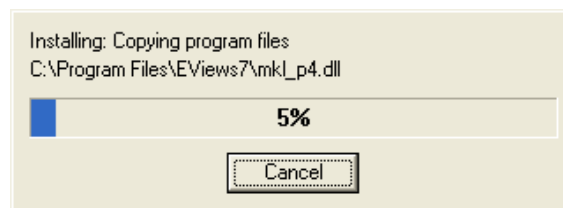
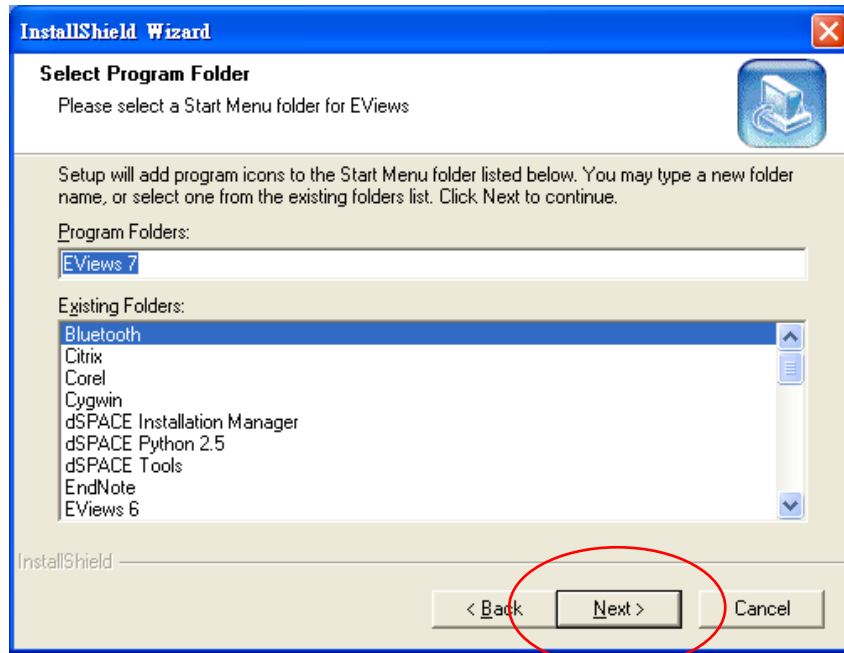


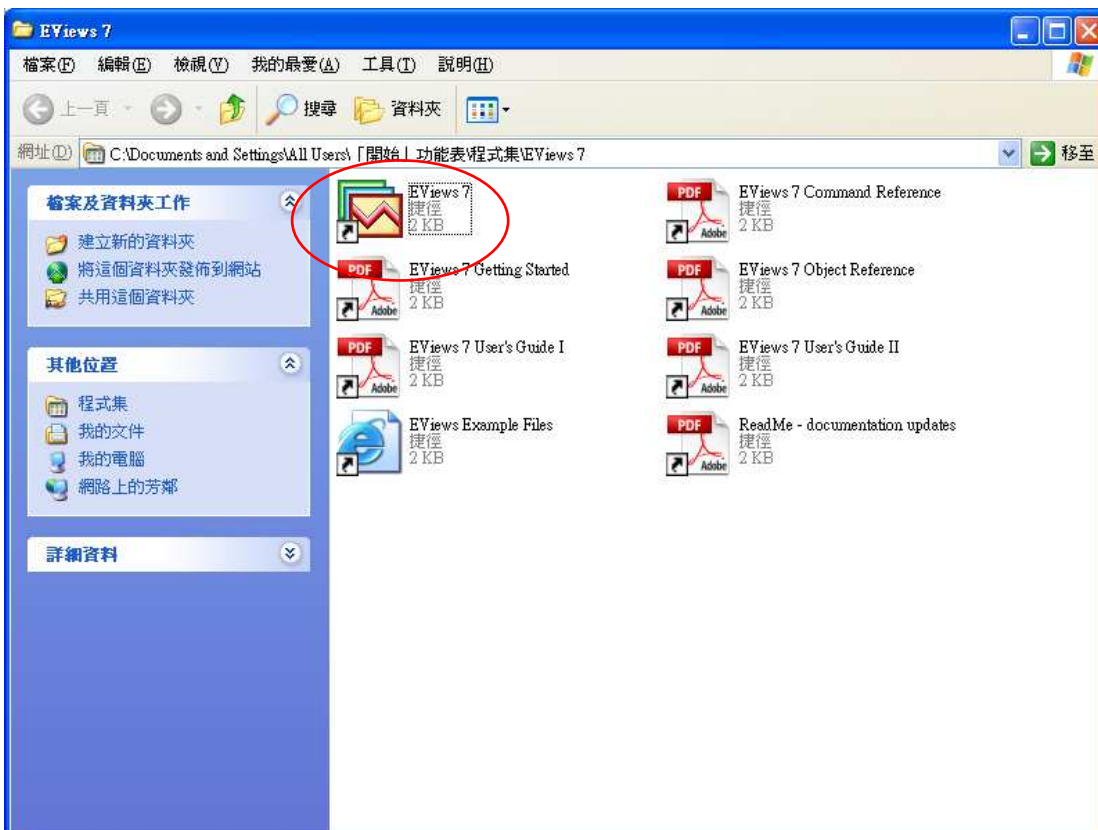
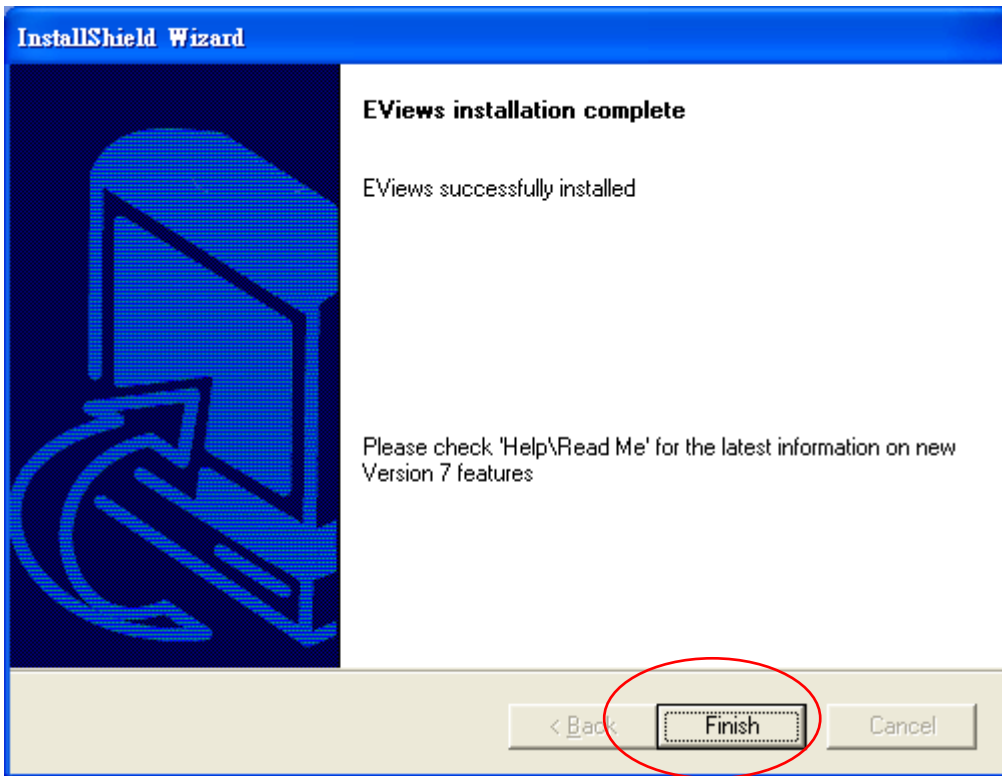
選取安裝位置



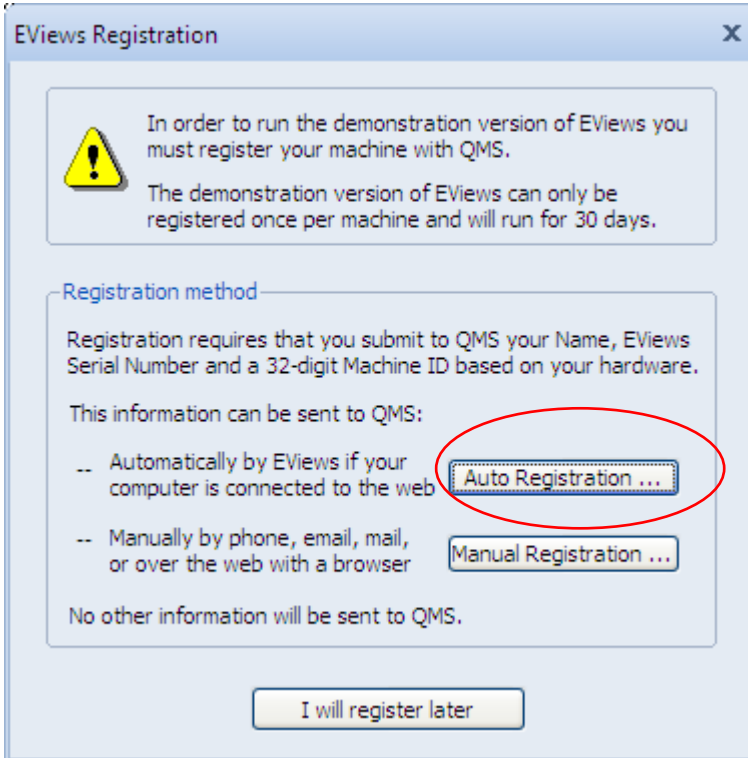
請注意, Serial Number: “demo”, Name : “SFI”







執行 EViews 後,出現註冊視窗。 若是電腦有連結網路,請選擇”Auto Registration”
若沒有連結網路, 請選擇”Manual Registration”, 經由 email 的方式取得權限



請注意: Serial# “demo”; Name : 請 key 入昊青提供的序號(sfiXXXXXXXX)

