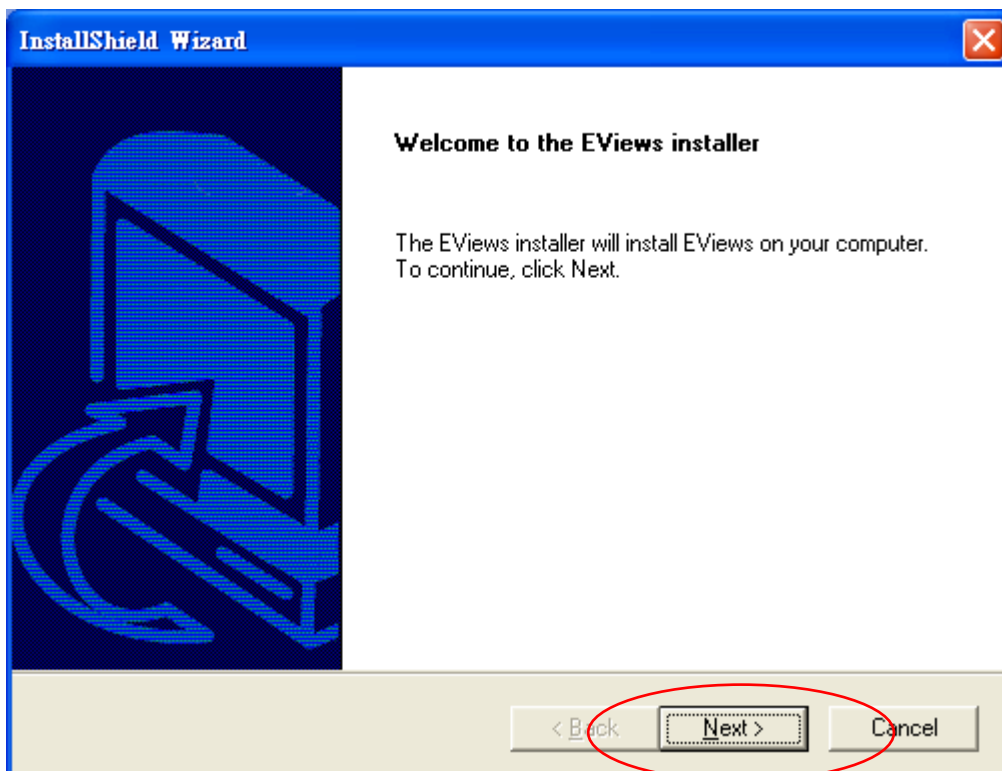
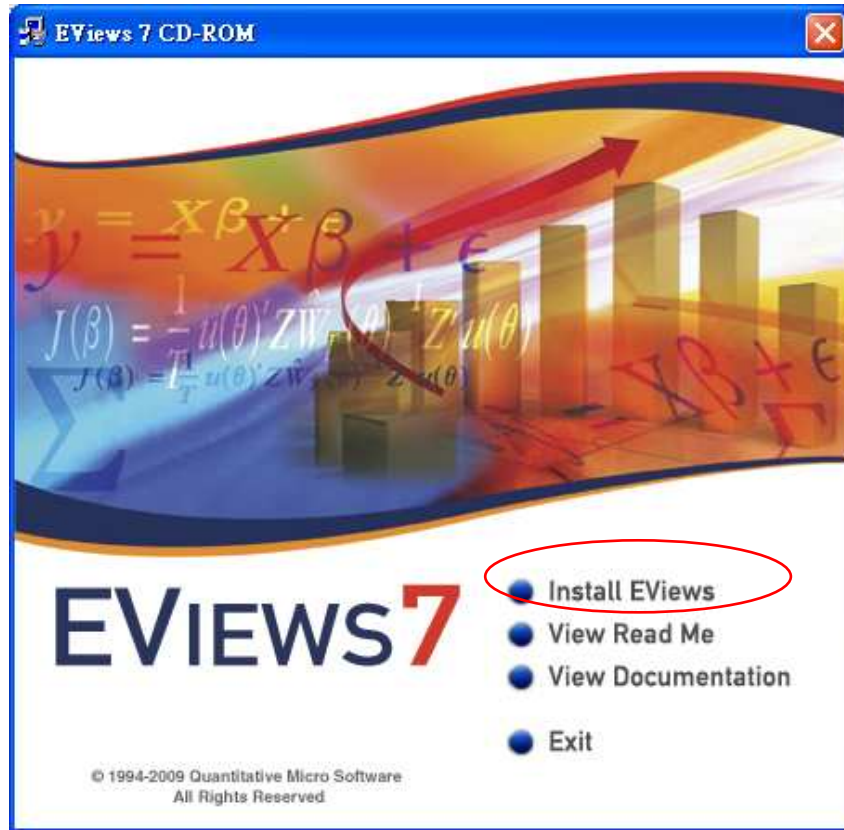
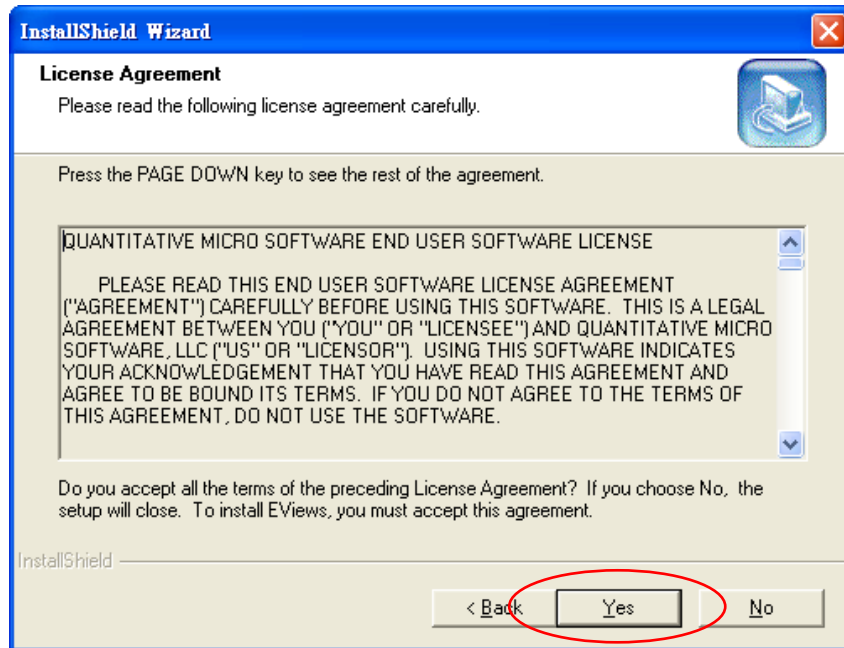


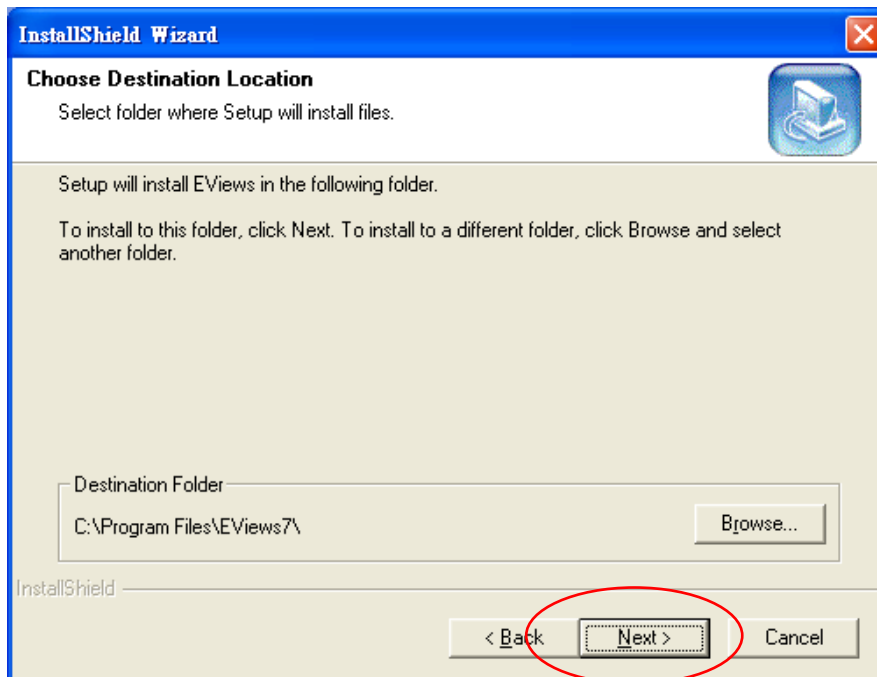
EViews 7 Single License 安裝指南

放入 CD 後自動執行，選取 Install EViews

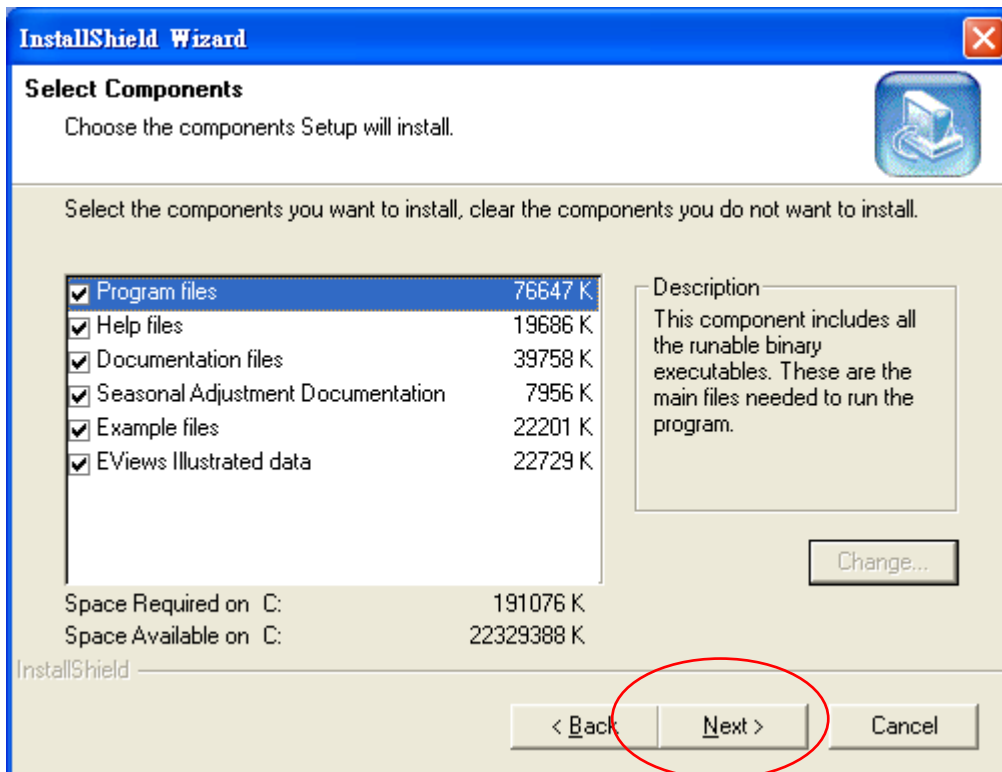
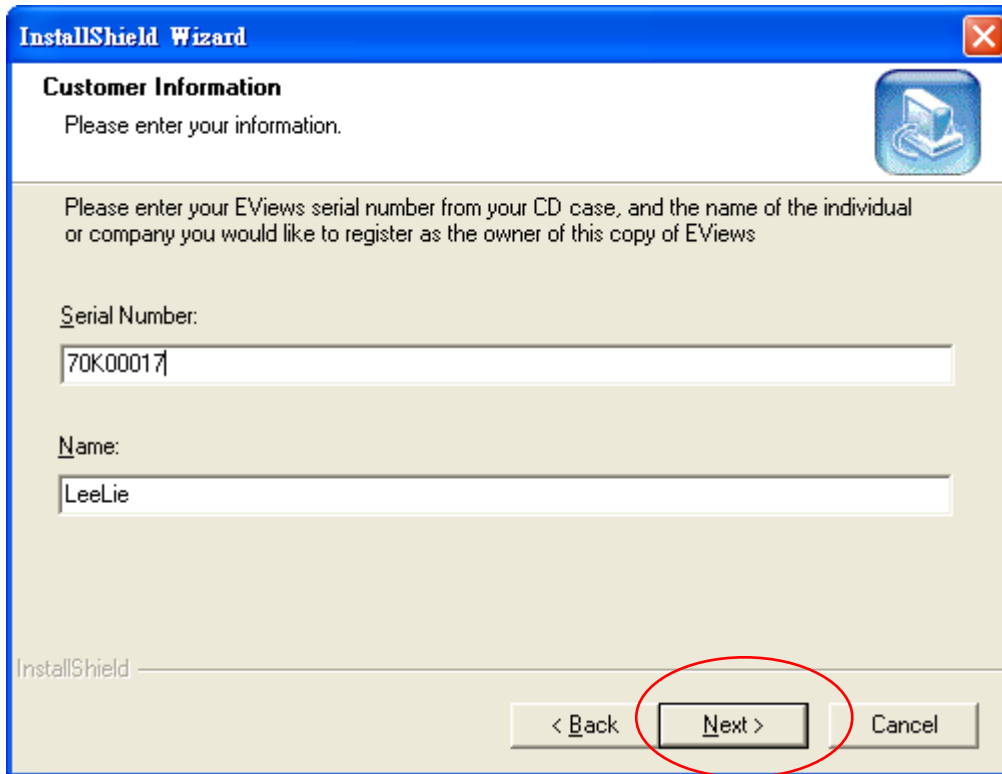


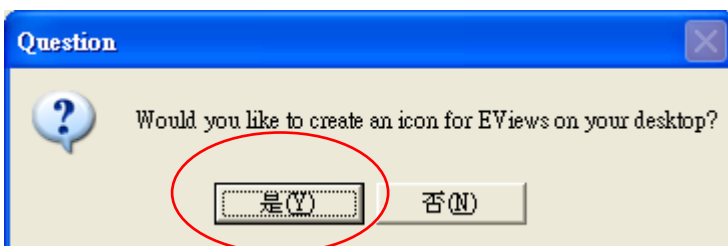
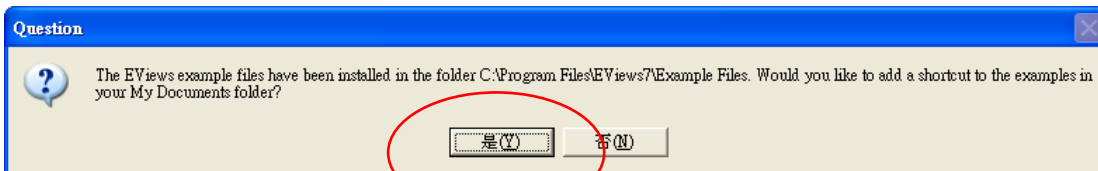
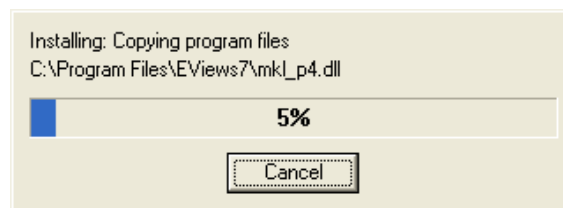
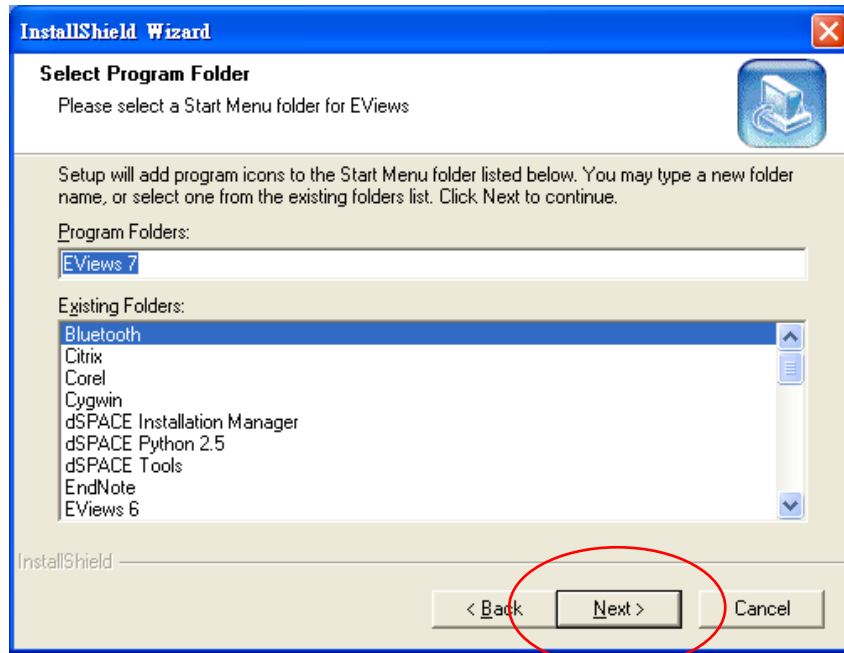


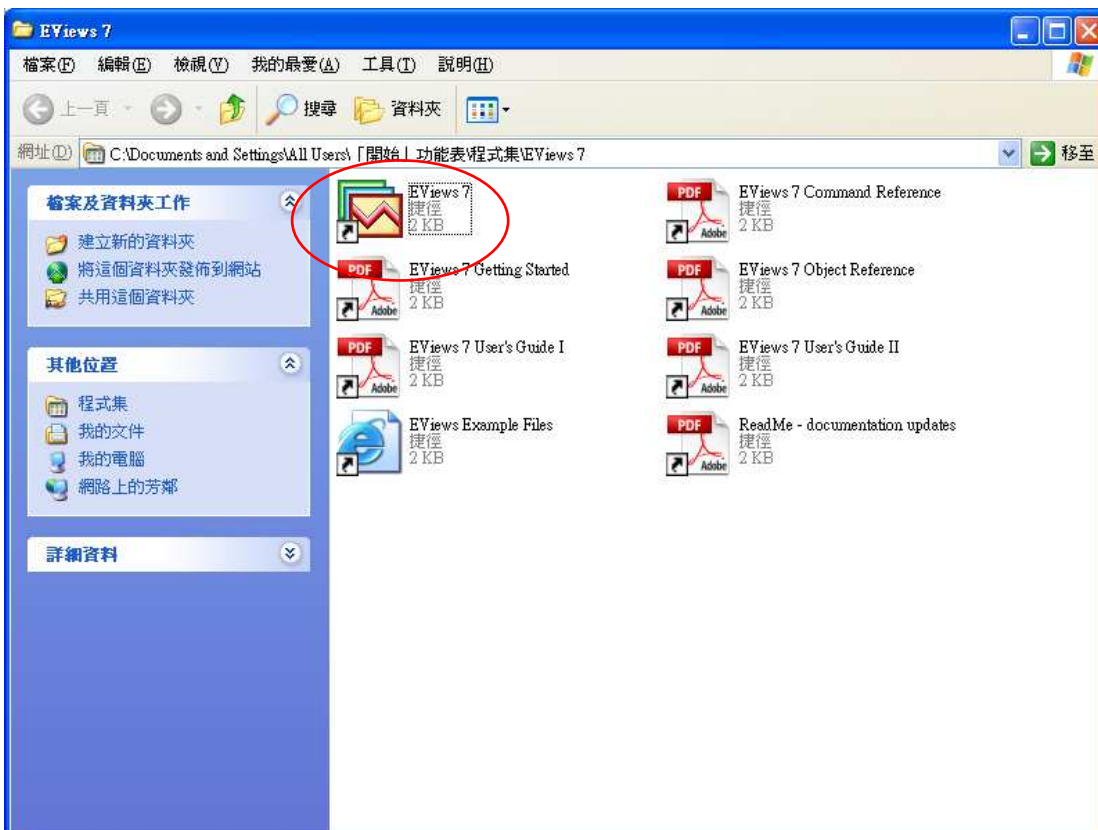
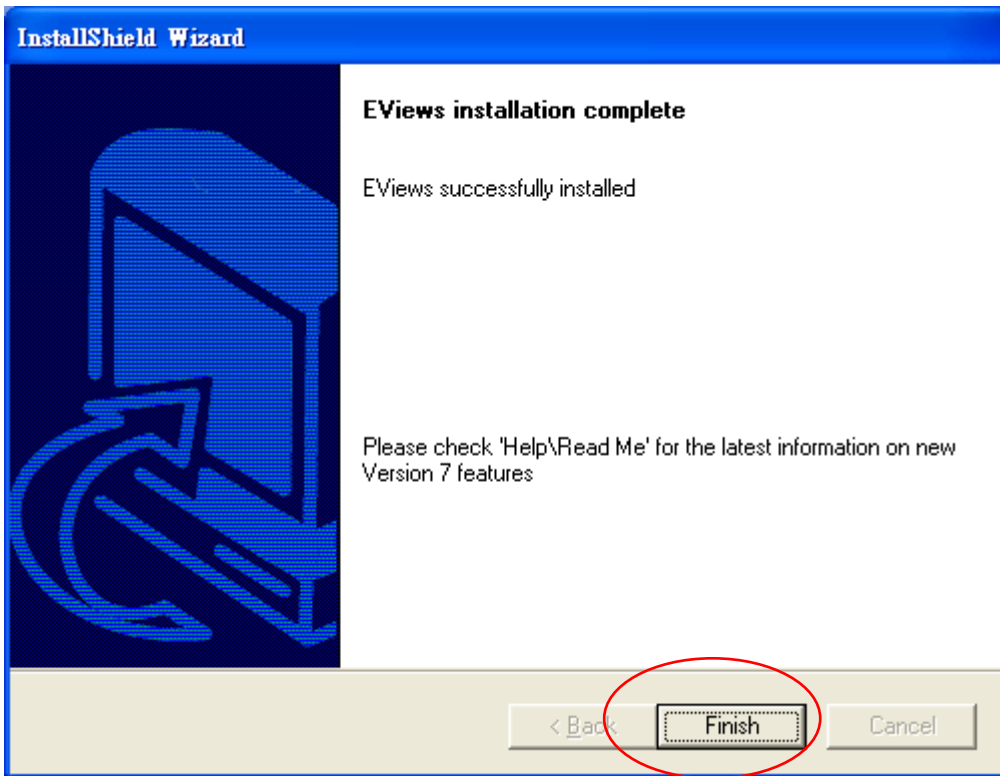
選取安裝位置



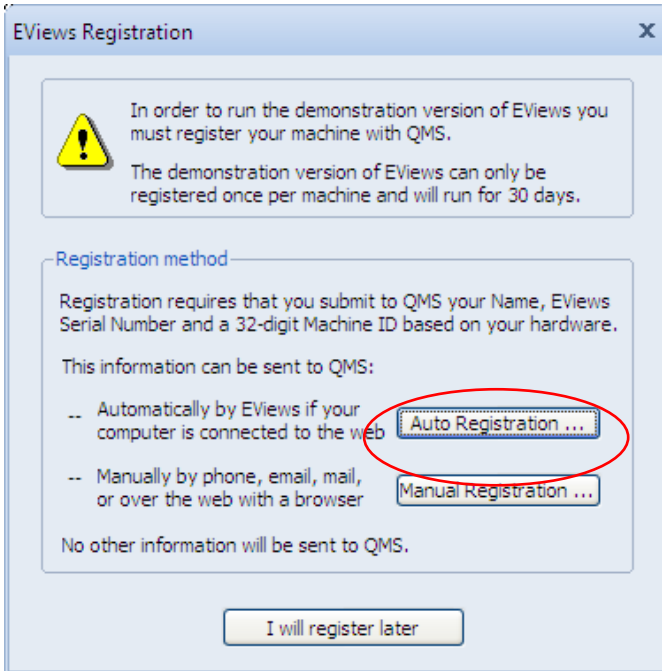
輸入產品序號 70A00XXXX-XXX... 與使用者名稱







執行 EViews 後,出現註冊視窗。 若是電腦有連結網路,請選擇”Auto Registration”
若沒有連結網路, 請選擇”Manual Registration”, 經由 email 的方式取得權限



再次輸入序號與使用者名稱, 請勿更動下行自動生成的 machine ID
若您的機器無連接網路,請記下 machine ID,到另外一台有網路的電腦進入
www.eviews.com/registerServer 輸入相關資料以取得 Manual Key
回到這台電腦選取 manual registration 即可輸入該 key 取得認證

