

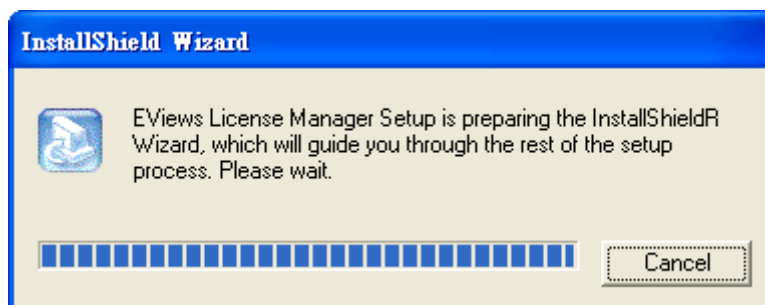
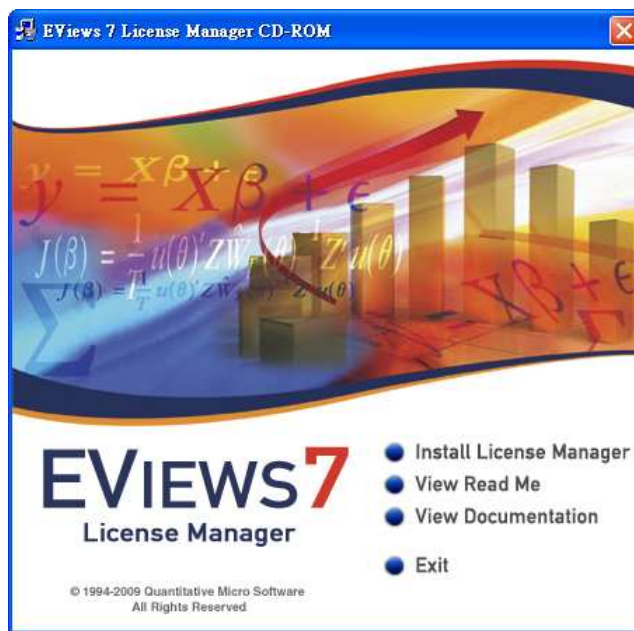
## EViews 7 Network License 安裝手冊

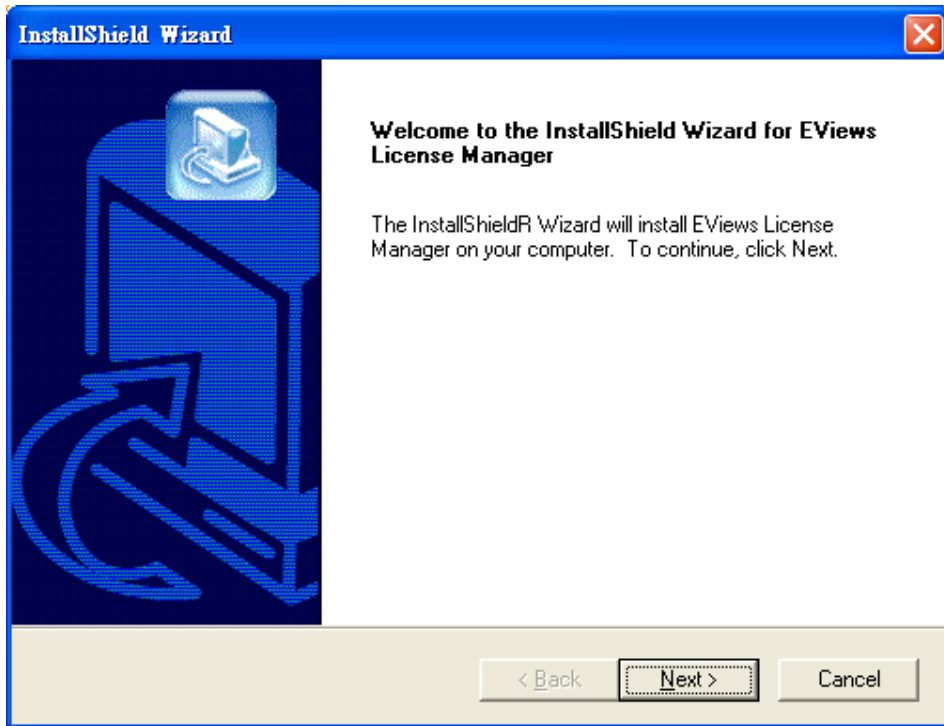
### 安裝前置作業

確認是否收到兩片光碟：一為 License Manager CD；另一片為前端使用者安裝的 CD。請注意 License Manager 盒背貼有兩組序號，一組為測試用 License，以 70U 開頭，該序號僅供 3 個 client 端測試，可註冊三次，啓用後 30 天即無效；另一組序號為正式序號，僅可註冊一次，若需要更換 Server，需與 QMS 聯絡。

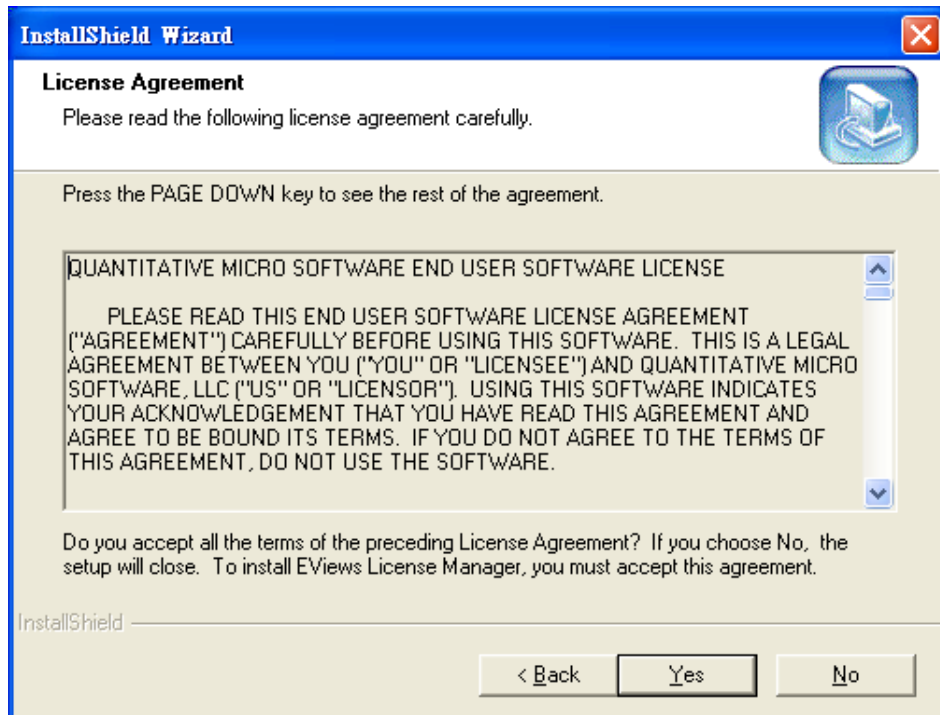
**Step1.** 選擇一台機器當做 server 安裝 license manager，此台機器僅作為管理 license 用，但須與各 client 端電腦處於同一個區域網路。

**Step2.** License Manager 安裝：放入 License Manager CD，選取 Install License Manager 之後，非 Yes 及 Next.

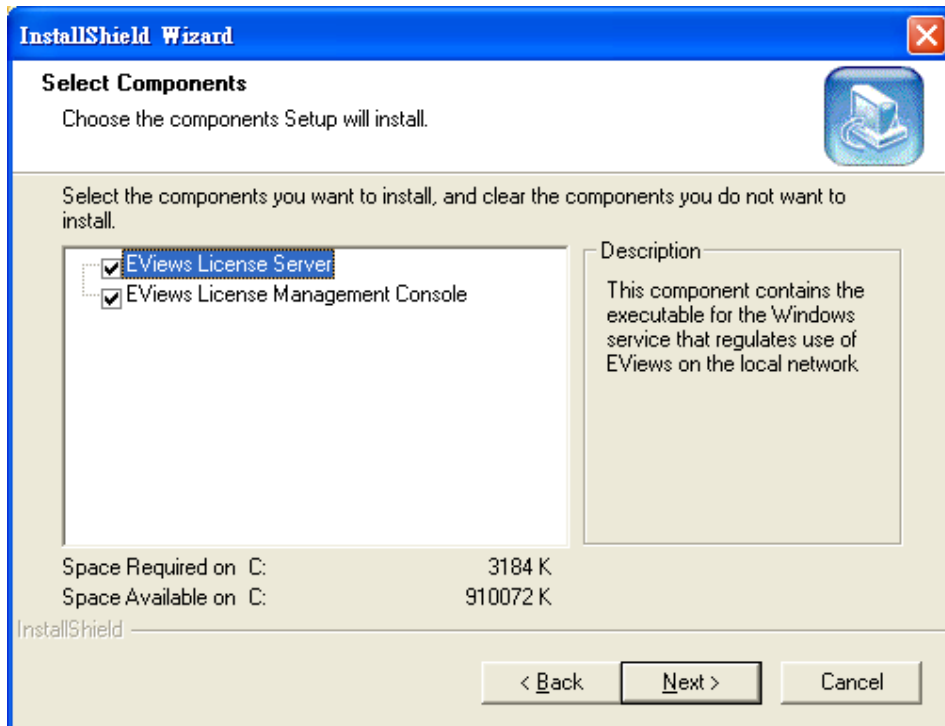
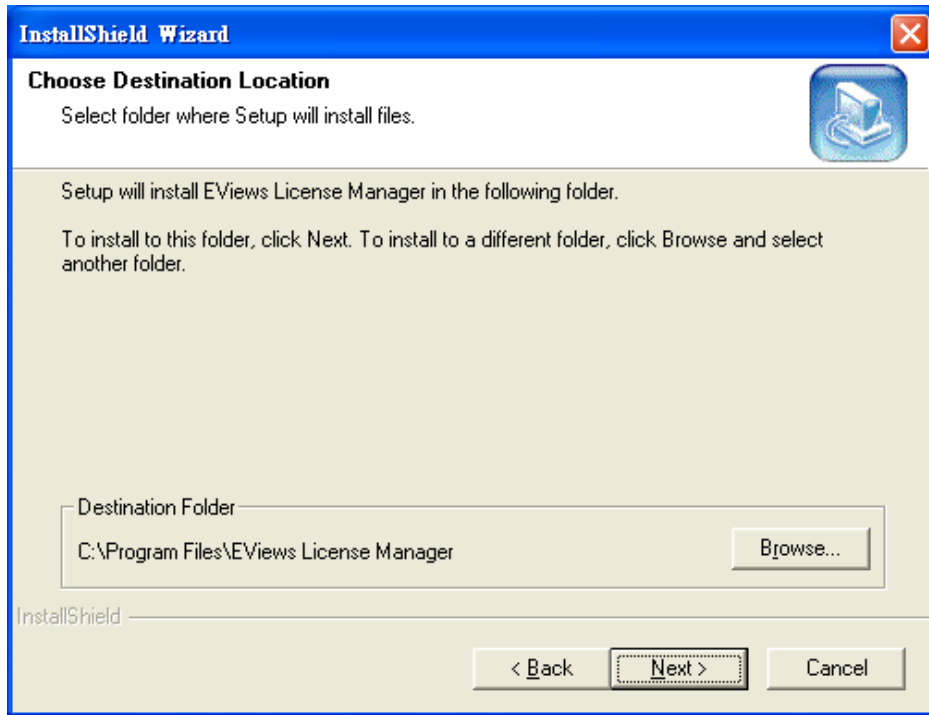




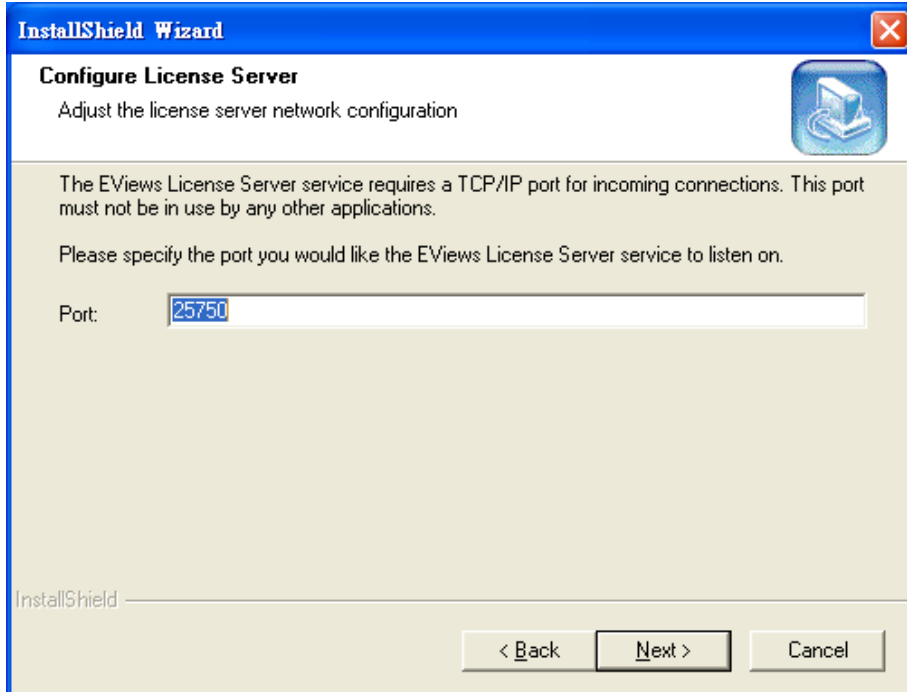
同意條款



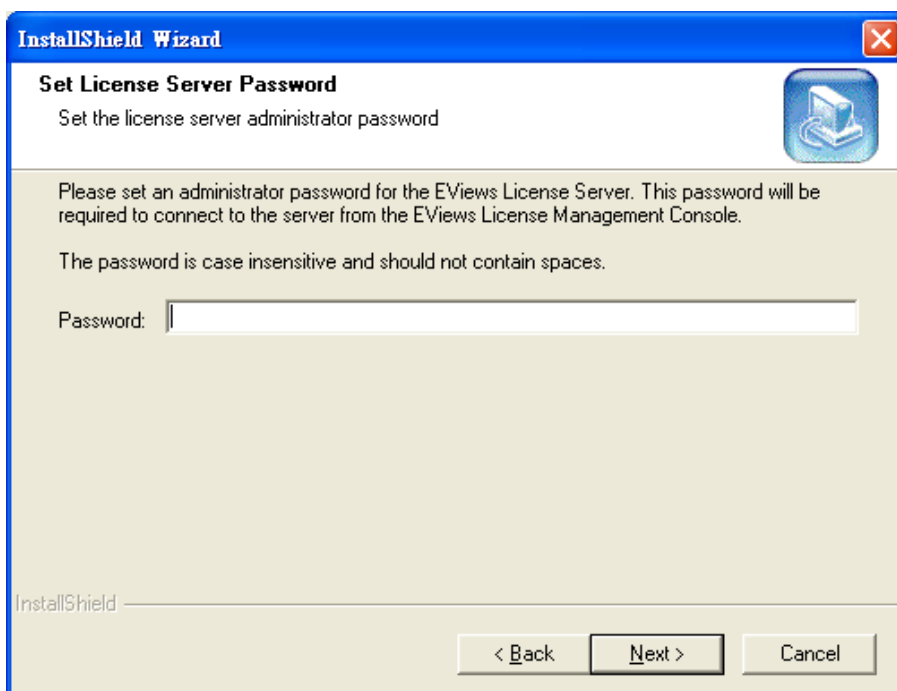
確認安裝路徑



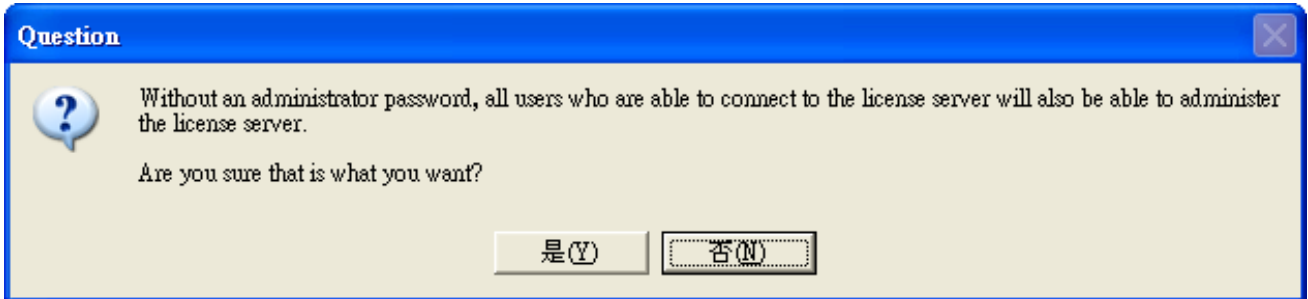
QMS 預設的 TCP/IP Port 為 25750，如果有需要變更，請記住設定的 port，之後安裝 client 端電腦有需要指定 port.



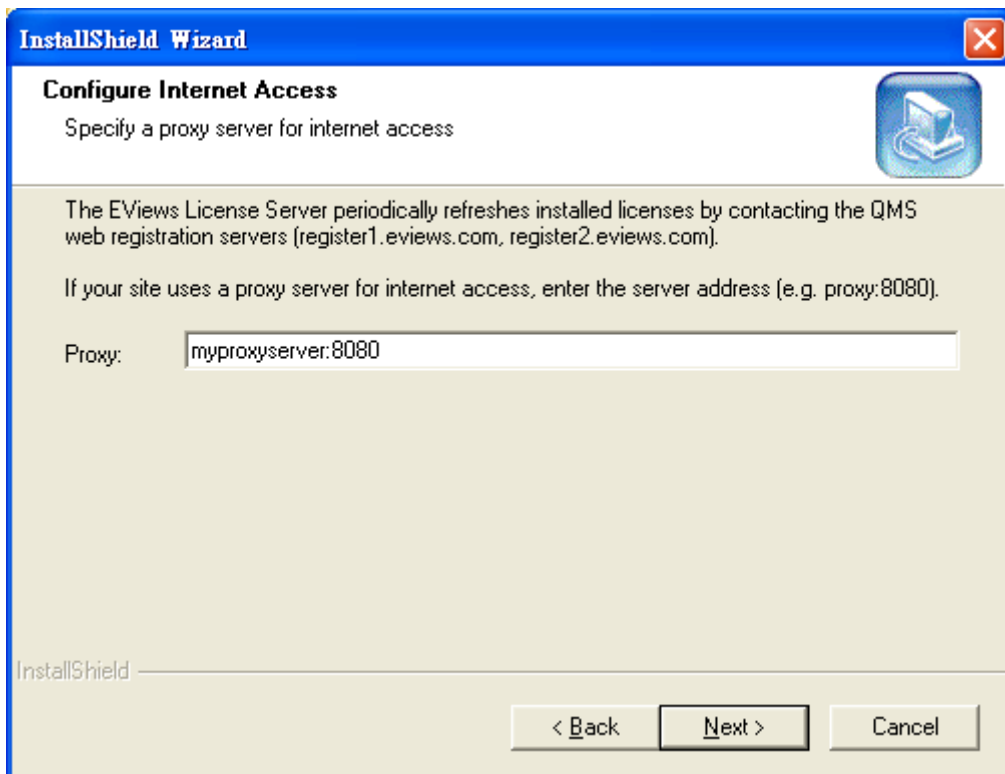
設定 License Server 密碼，主要是確保 License Manager 的管理功能。之後若要在 License Manager 上設定權限都需要輸入密碼。亦可以選擇不輸入密碼(保留空白直接選擇 Next)，則會出現下列“Question”視窗，跟您確定若是沒有設定密碼，所有 License Server 的使用者都可以開啓 license manager console 進行權限設定。



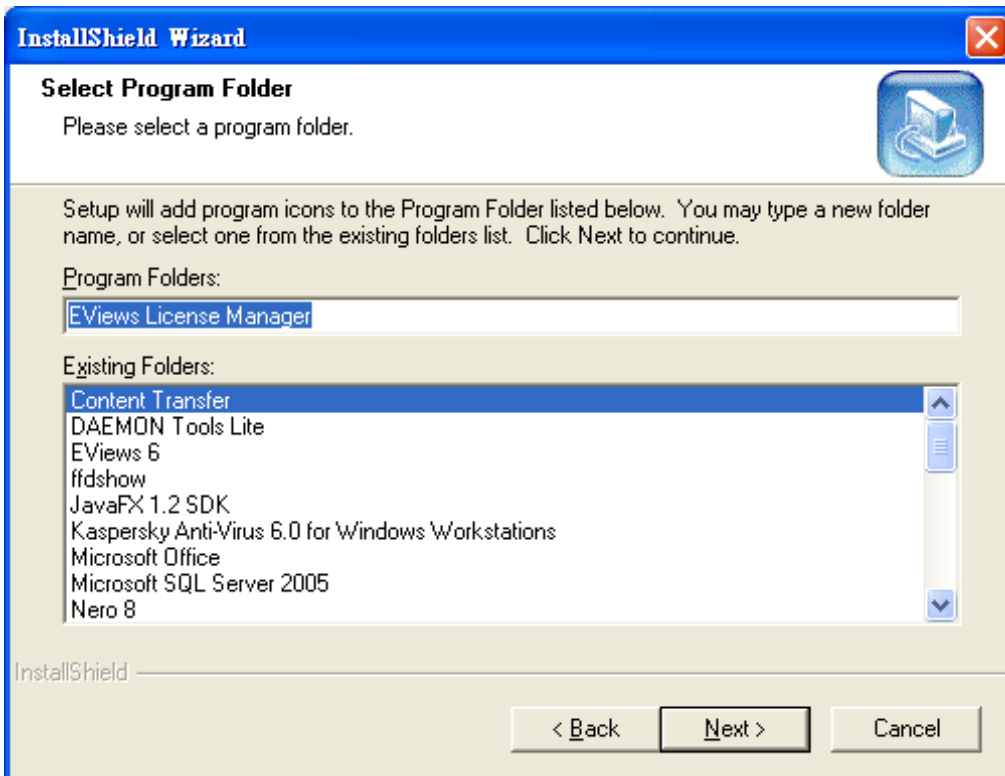
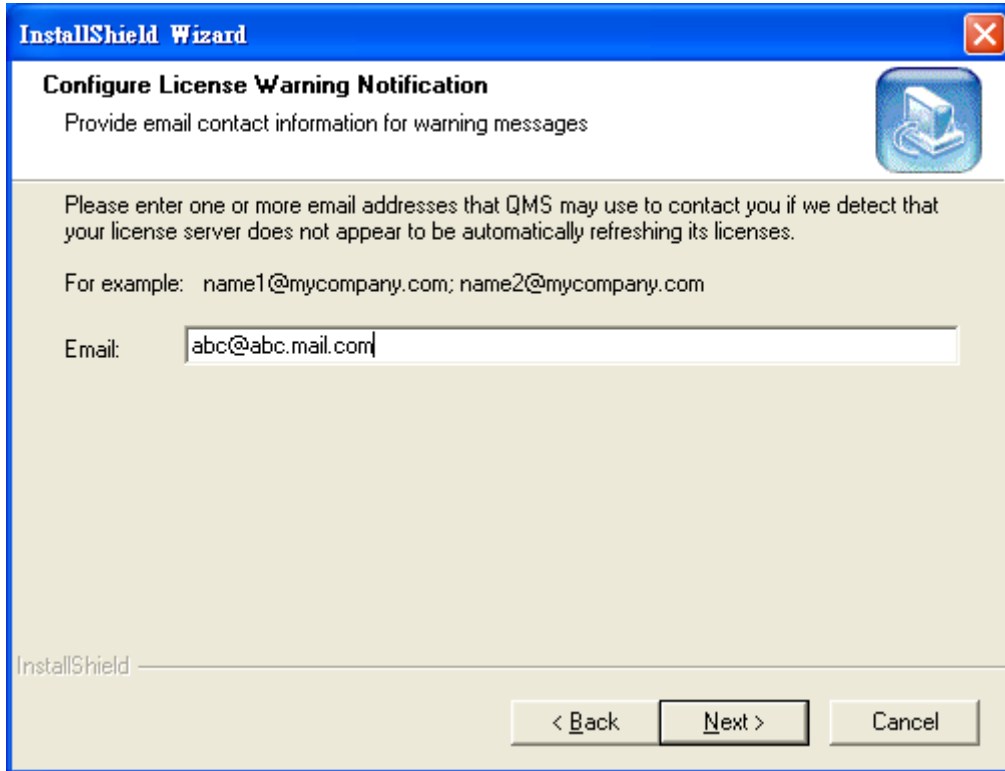
若是確定不需要密碼，請選擇 Yes 繼續

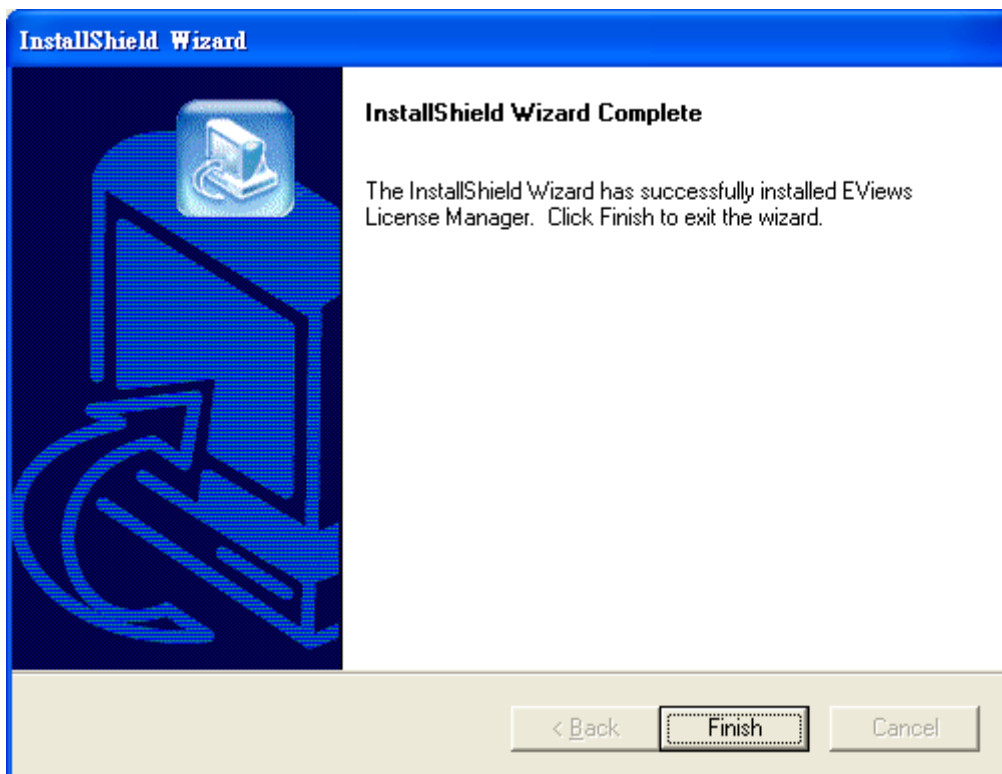
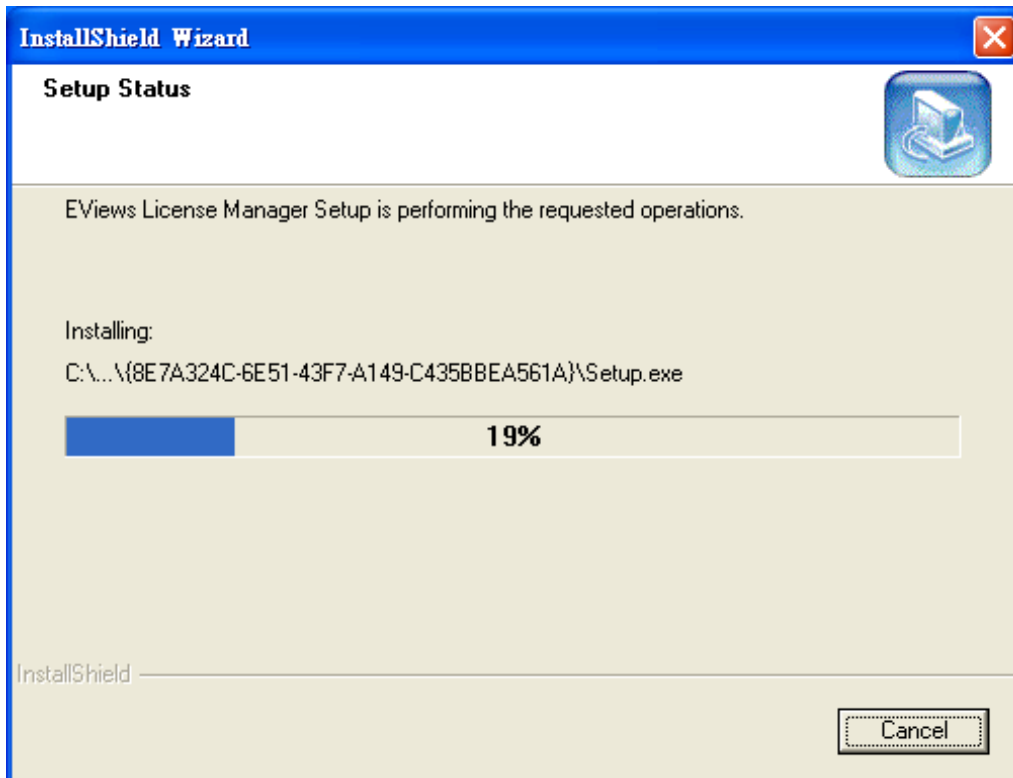


由於之後的 license 註冊與更新皆需要透過標準 http(port 80)連線 Internet，若是您的 Internet 連線需要透過 proxy server，請在此處輸入位址與 port。如果沒有相關設定，此處可留空白。



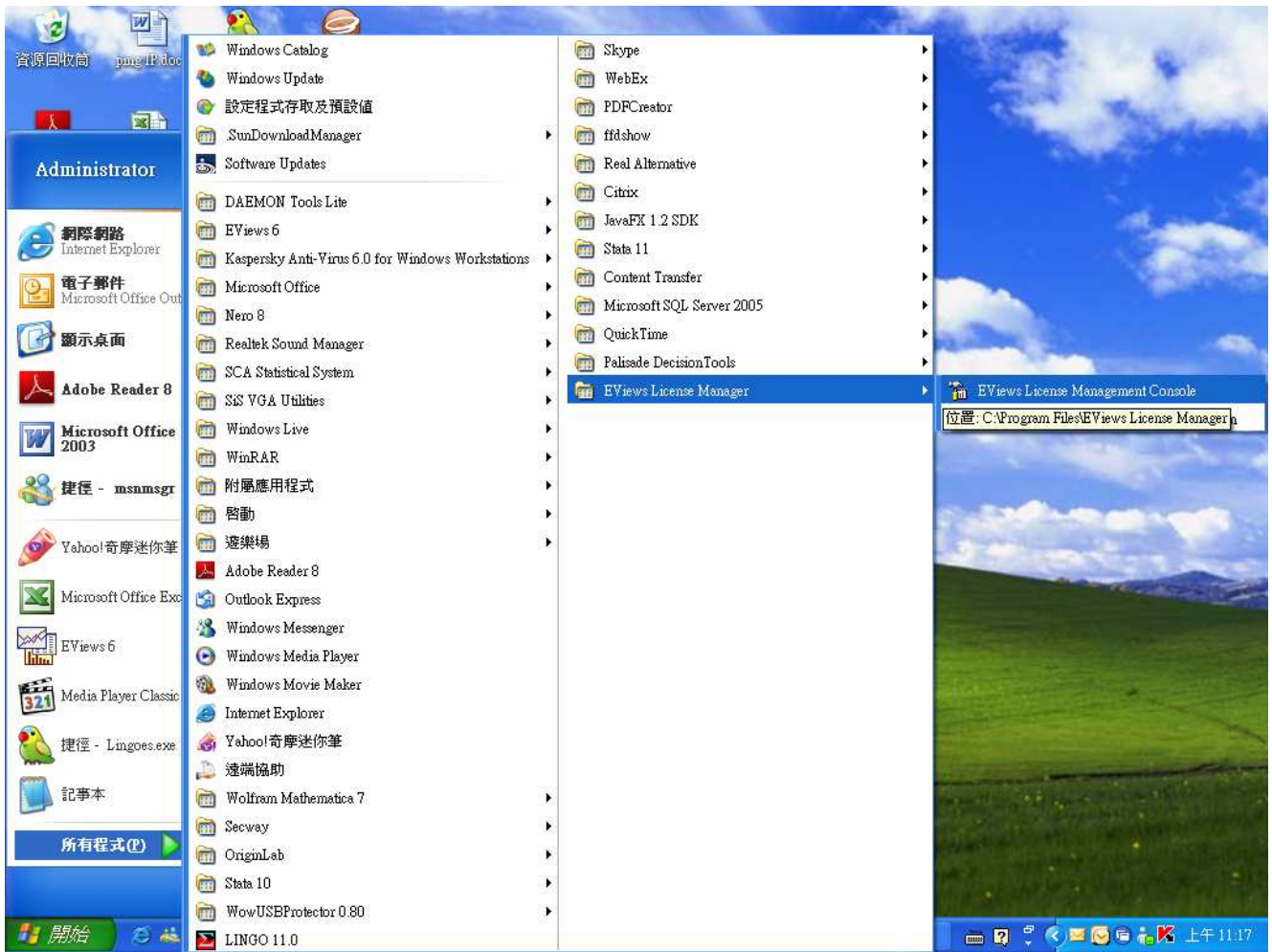
請輸入有效 email，之後任何 License Manager 相關事物包括 license 到期等事物皆會直接透過 email 通知，該 email 不會作為任何商業用途。



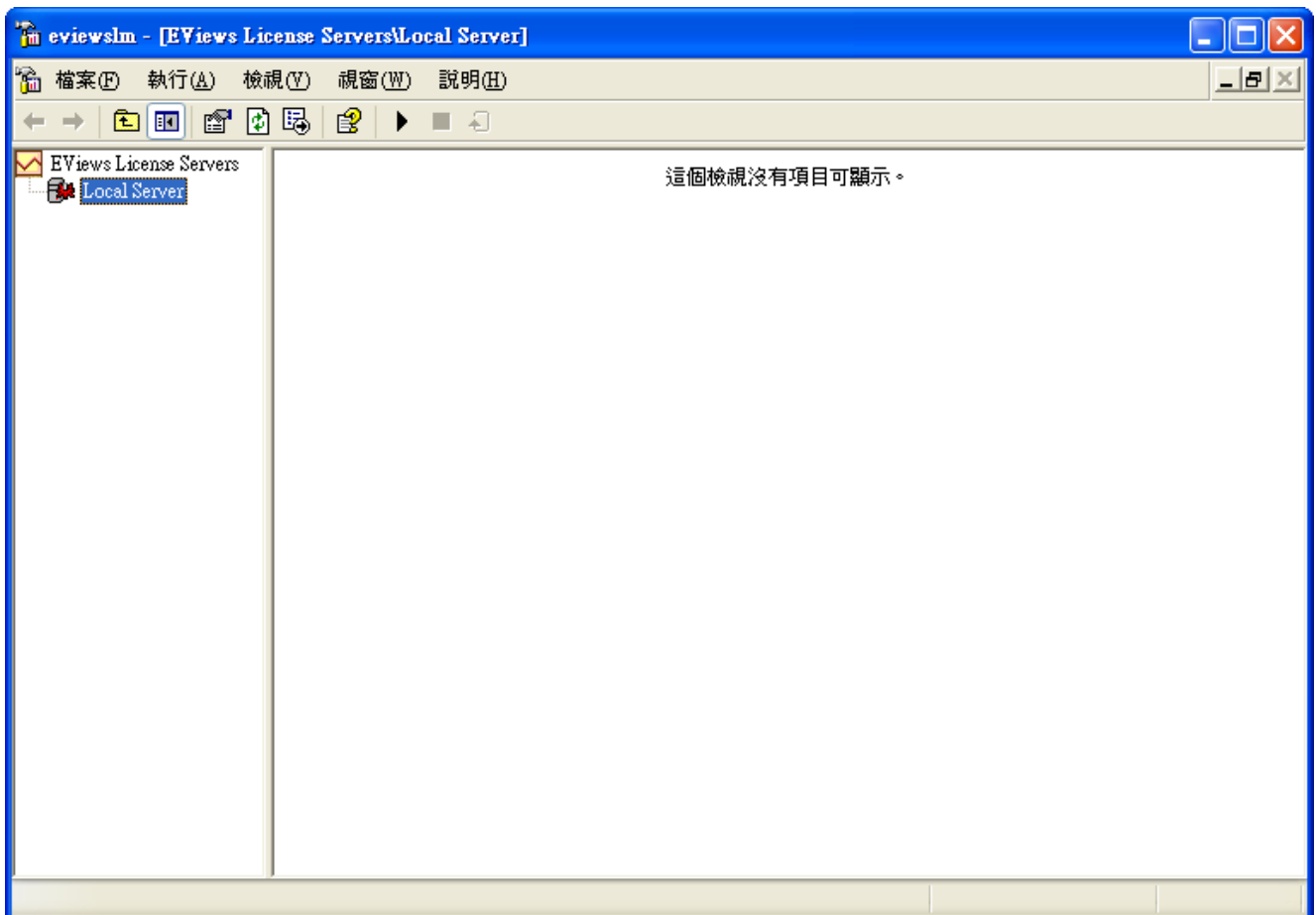
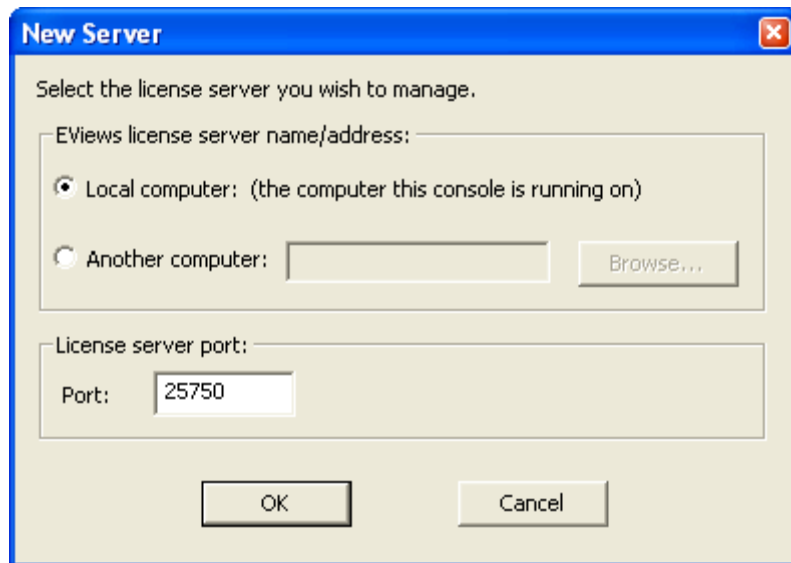


Finish 完成安裝 license manager

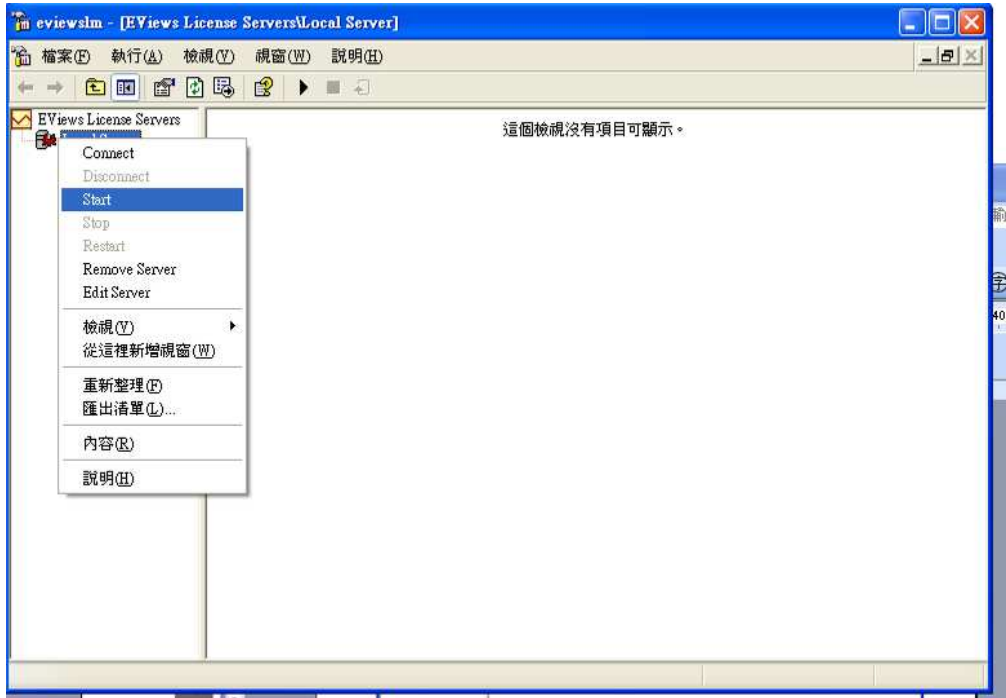
Step3. 開啓 License Manager 進行設定 (開始>所有程式>Eviews License Manager)



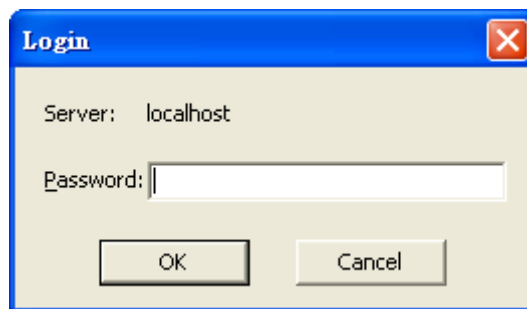
License Server 在本機,選取 OK 即可



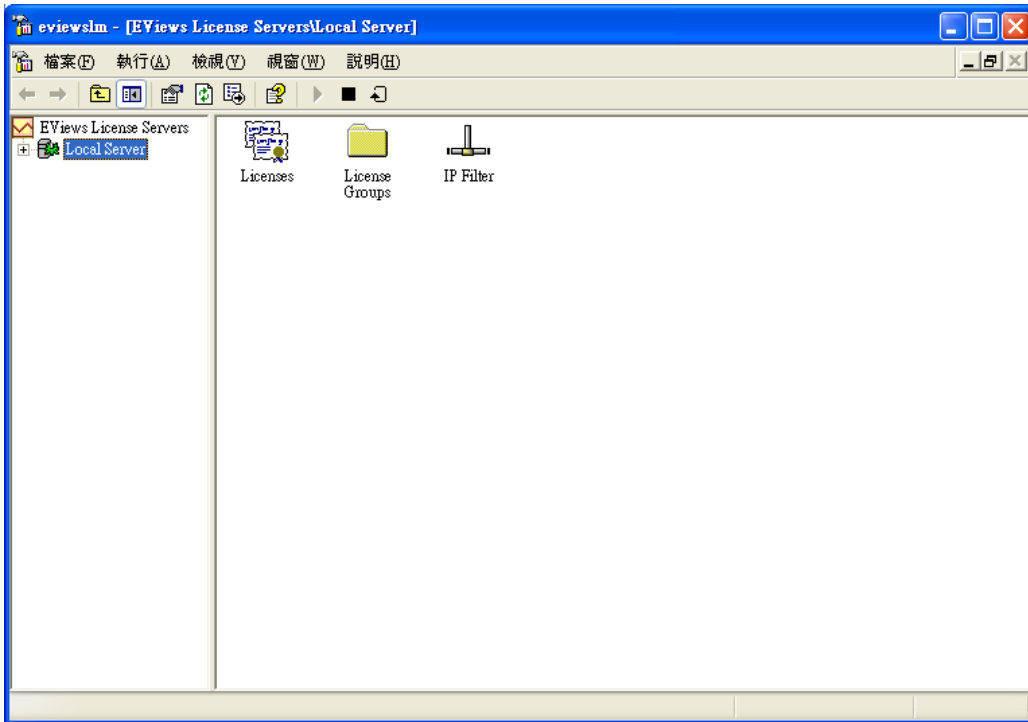
若尚未註冊 license 成功，Local Server 上面會是紅色標誌，此時在左邊視窗(樹狀圖)的 Local Server 上面按滑鼠右鍵，選取 Start



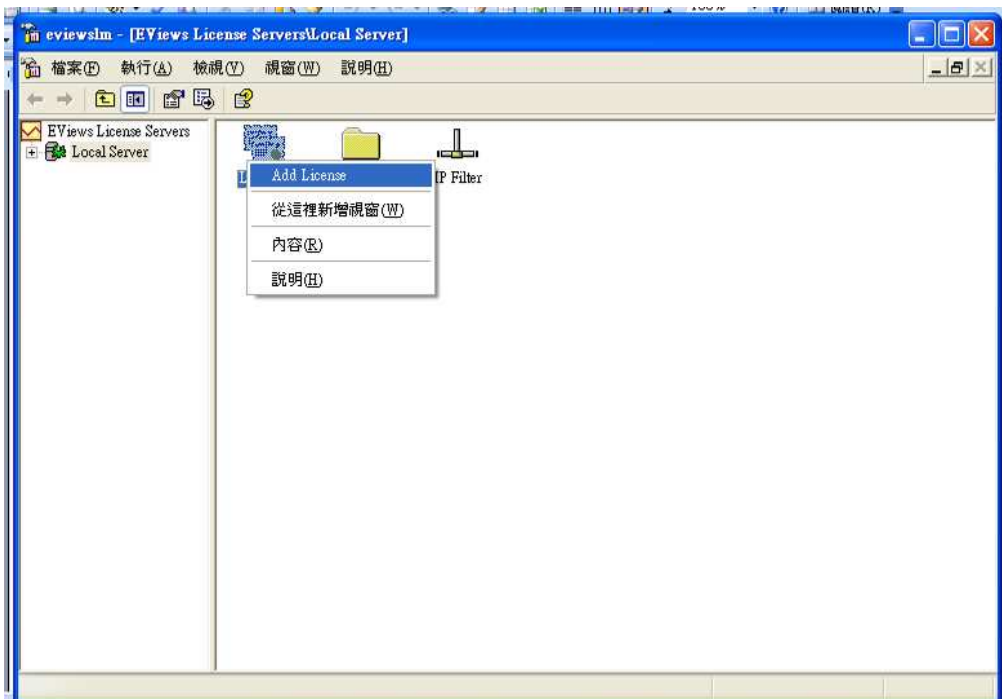
若安裝時有輸入密碼，請在此輸入；若是忘記密碼，請來電詢問如何進行下一步！



此時 Server 上的記號會變成綠色，點選+會出現 License、License Groups、IP Filter



在 License 上按滑鼠右鍵，點選 Add License



出現下方 Add License Pack 註冊視窗

- ✓ 若是 Server 有連接網路，請輸入盒子背面的 Serial#與貴單位名稱→選擇 Automatic→ Register Now.
- ✓ 若是 Server 不連網路，記下 machine ID，至可連接網路的電腦於 EViews 官方網頁上(<http://register1.eviews.com/>)進行註冊。完成註冊後會得到一組 RegID。之後回到此 Add License Pack 中鍵入 license serial#與 Organization name，選取 manual 後於下方鍵入 RegID.

Register Now 之前請先確認 email 是否輸入正確

**Add License Pack**

Instructions

Please enter the license pack serial number and licensee name:

Serial # 70K00017-|

Name SFI-Test

Machine ID D70AE6B2 - 7C984F58 - 00301B35 - 72A86BD5

Choose the method to add a license pack:

Automatic - Let the management console register the license pack automatically via the web

Manual - Requires that a 36 character registration key be entered below

A registration key may be obtained by:

- 1) Using your browser, go to the EViews registration page and provide the User Information given above. [Go to www.eviews.com/registerServer](http://www.eviews.com/registerServer)
- 2) Email the 3 lines of User Information to: register@eviews.com.
- 3) Phone QMS at (949) 856-3368 and provide the User Info from above.

Enter the key obtained by phone, email, or browser:

\_\_\_\_\_

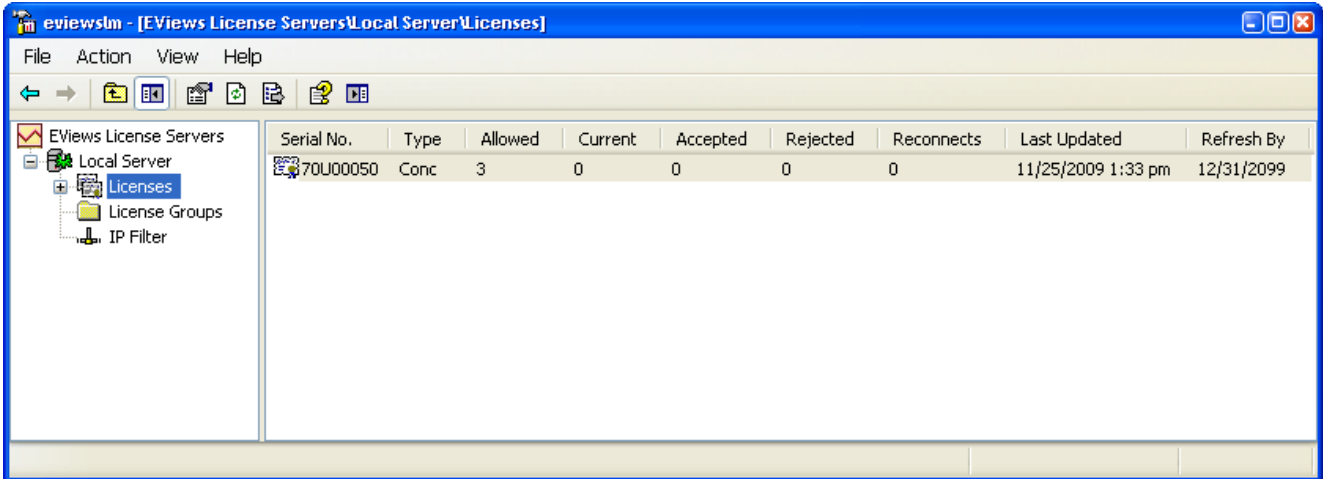
Please enter an email address that QMS may use to contact you if this license is not being refreshed correctly.

Email To:

To specify multiple addresses, use semi-colons

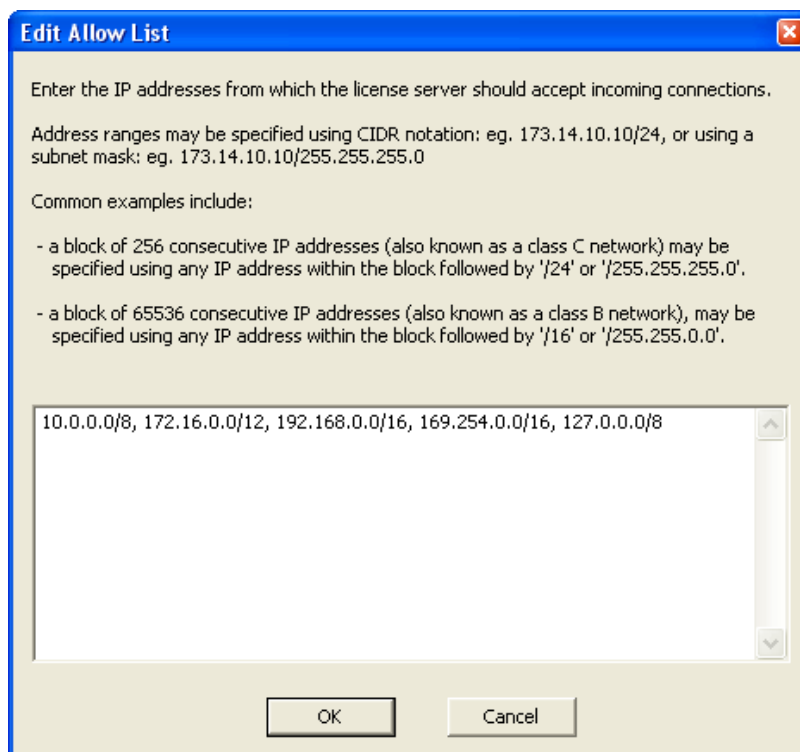
### 註冊成功會出現確認視窗

Your copy of EViews has been registered successfully. This machine has not previously been registered. A new registration has been created. This EViews serial number has now been used to register 1 machine(s).



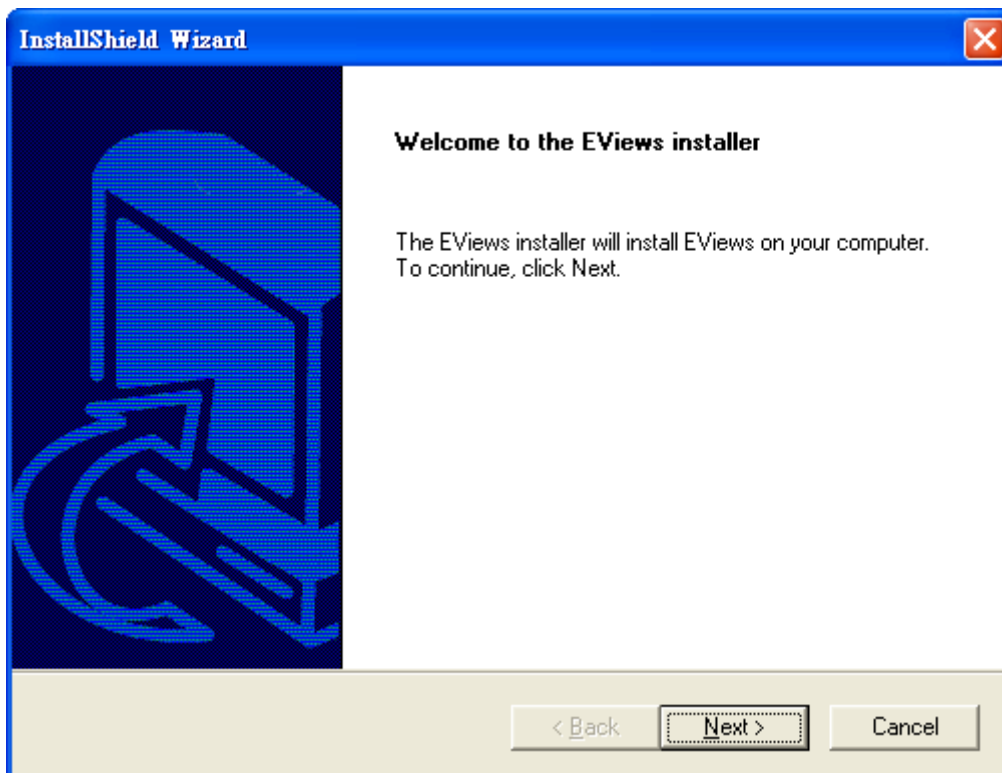
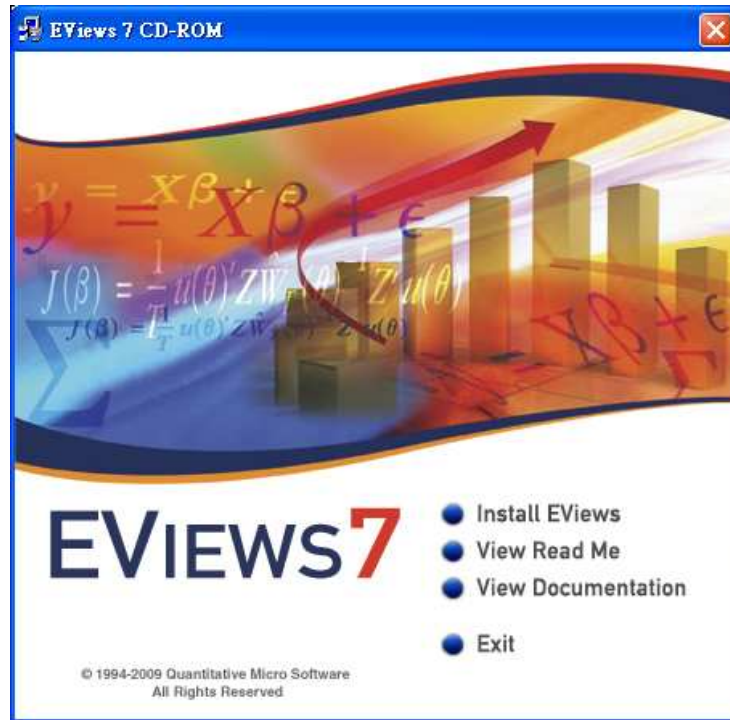
指定client端IP：系統預設IP為10.0.0.0 - 10.255.255.255/172.16.0.0 - 172.31.255.255  
192.168.0.0-192.168.255.255/169.254.0.0-169.254.255.255/ 127.0.0.0-127.255.255.255  
若有需要特別指定，點開左方樹狀圖，在 IP Filter 裡的 Allow 上點滑鼠右鍵選擇

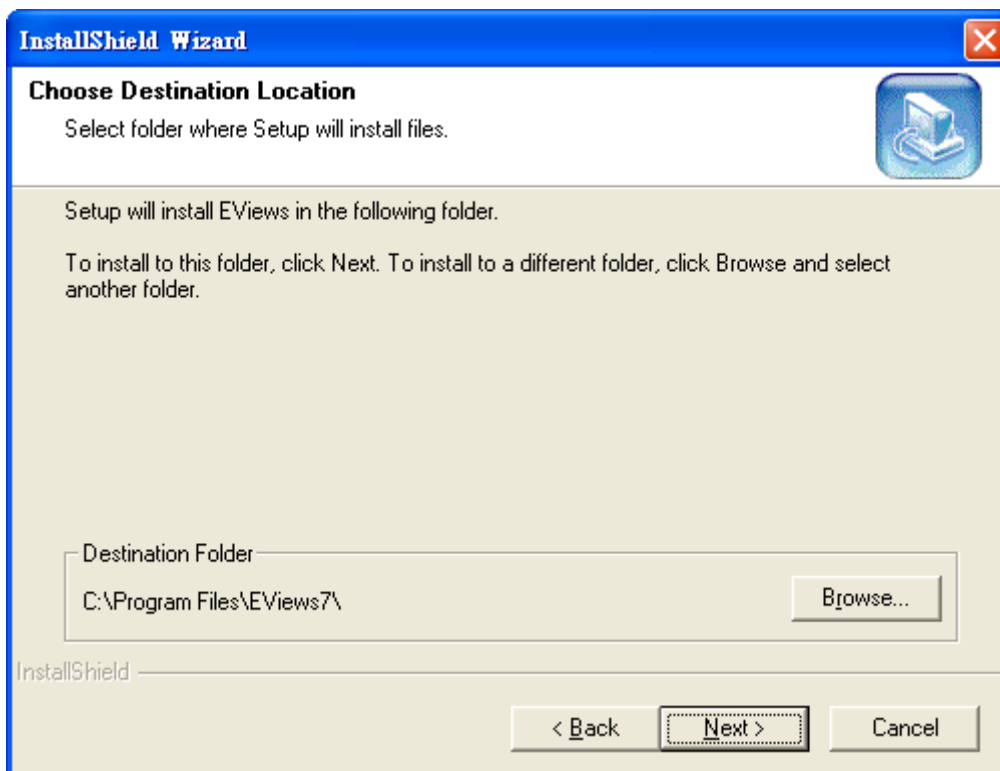
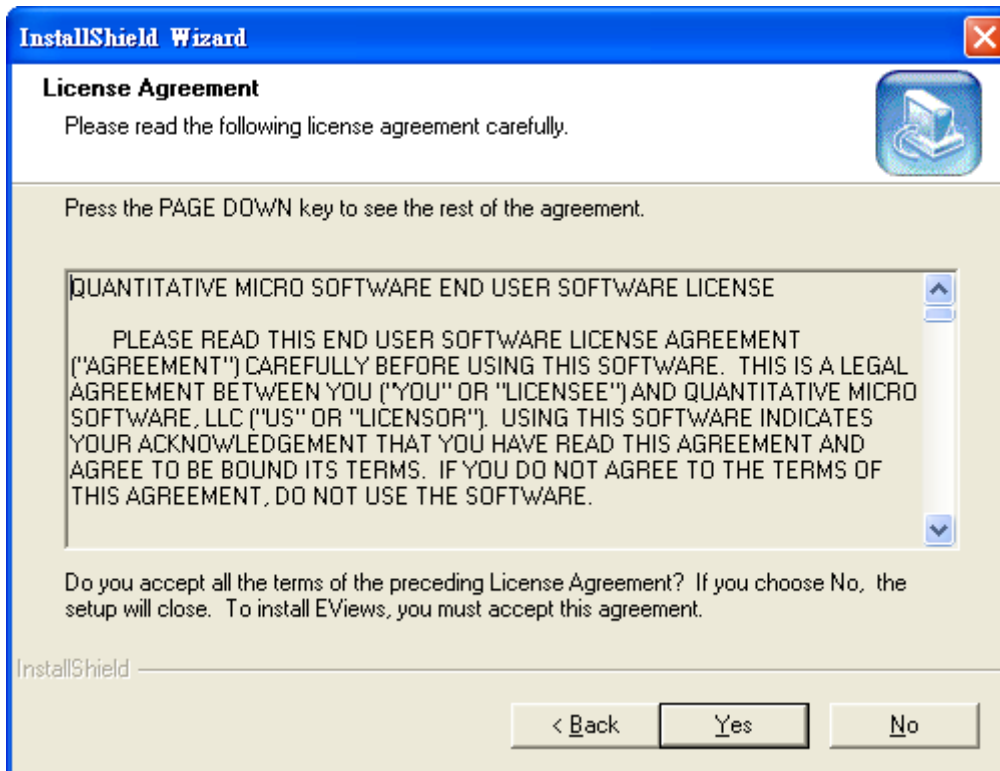
Edit List 直接編輯



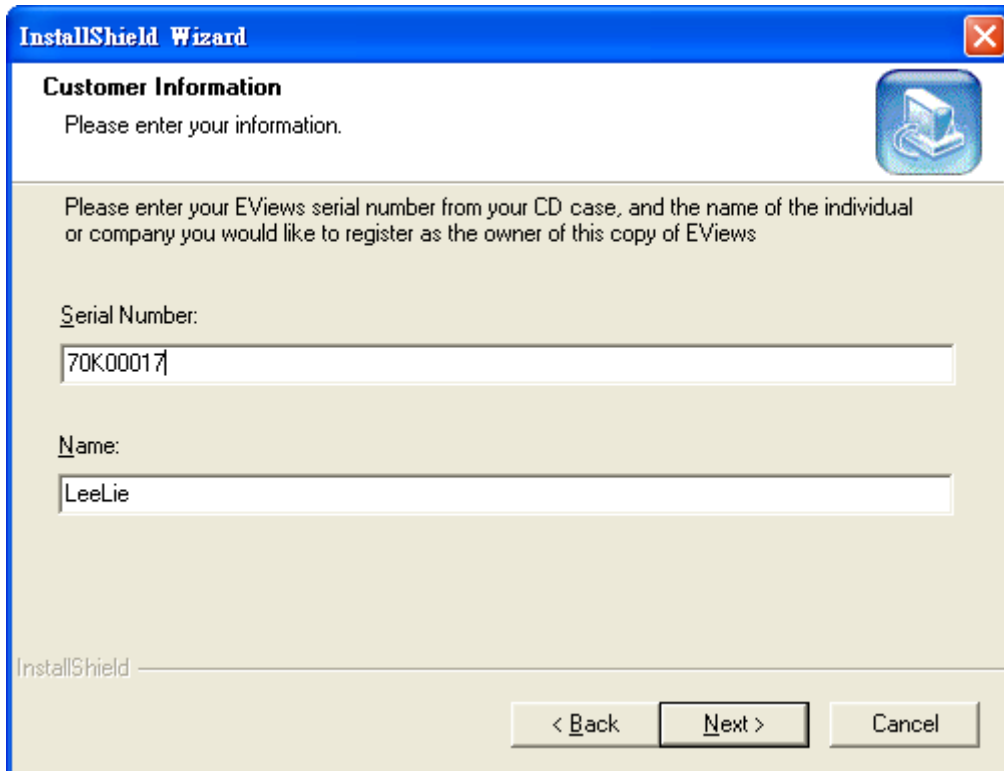
Step4. 安裝 client 端電腦

放入 EViews CD





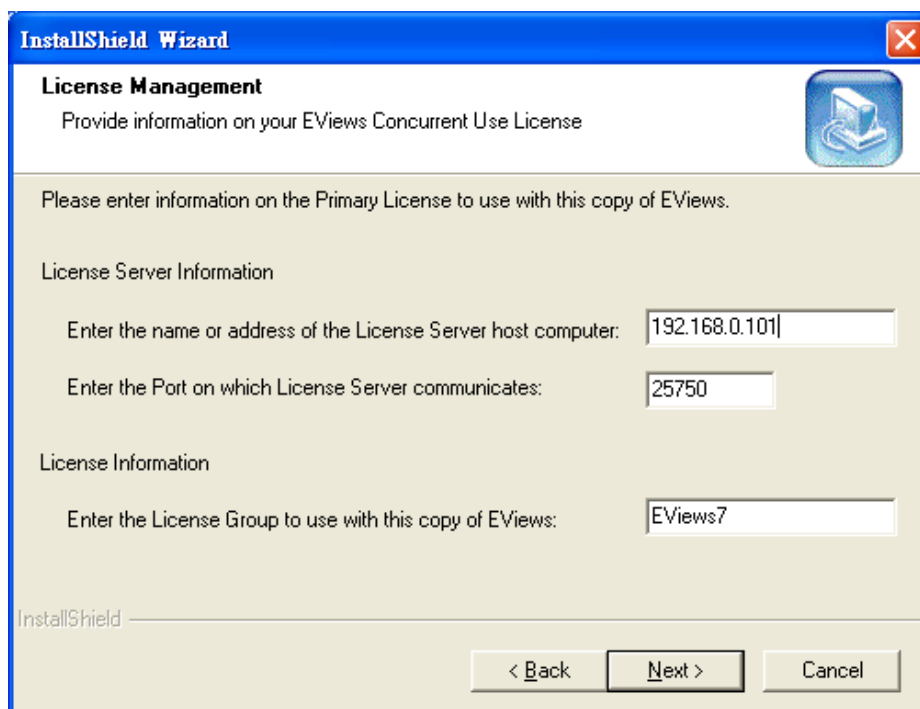
輸入產品序號



The screenshot shows the 'InstallShield Wizard' window with the 'Customer Information' tab selected. The window title is 'InstallShield Wizard'. The main heading is 'Customer Information' with a sub-heading 'Please enter your information.' Below this, there is a paragraph: 'Please enter your EViews serial number from your CD case, and the name of the individual or company you would like to register as the owner of this copy of EViews'. There are two text input fields: 'Serial Number:' containing '70K00017' and 'Name:' containing 'LeeLie'. At the bottom, there are three buttons: '< Back', 'Next >', and 'Cancel'.

輸入 server 端 IP 位置或 server 名稱

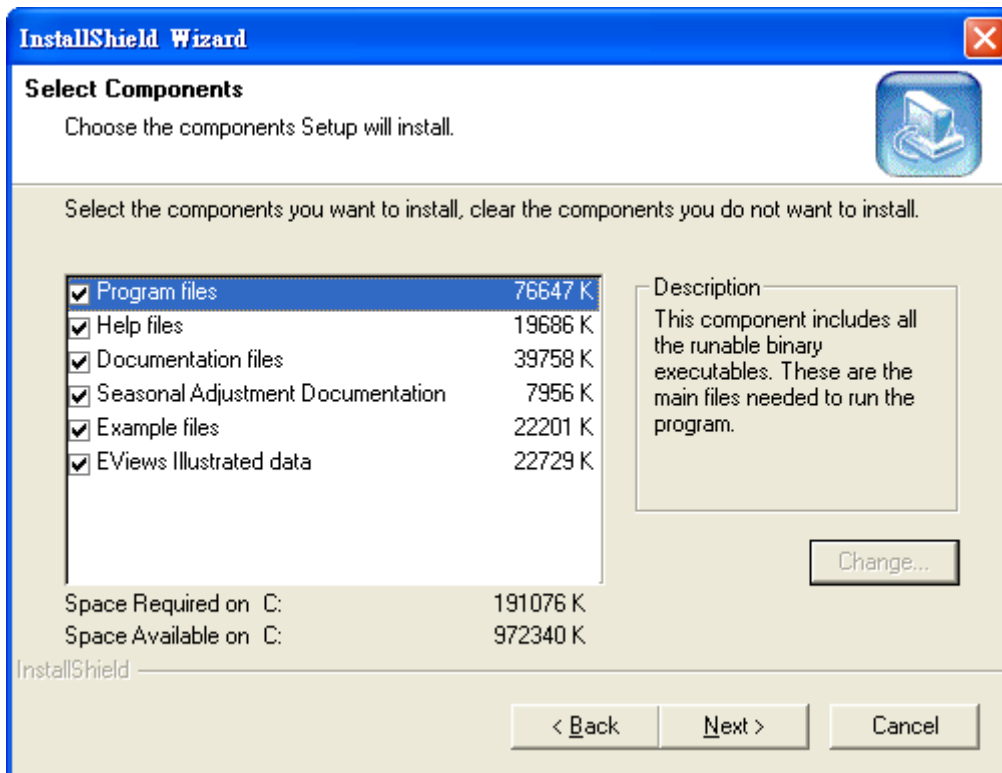
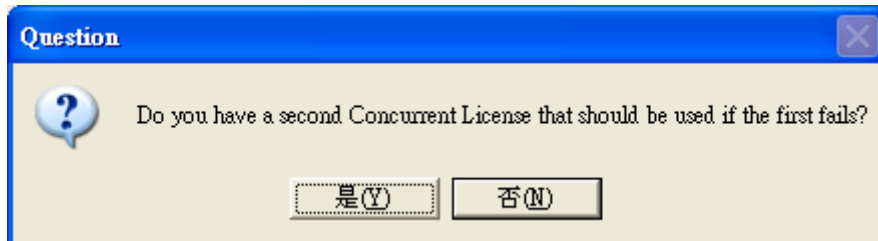
(請注意安裝 license server 時 TCP/IP Port 是否為 25750)

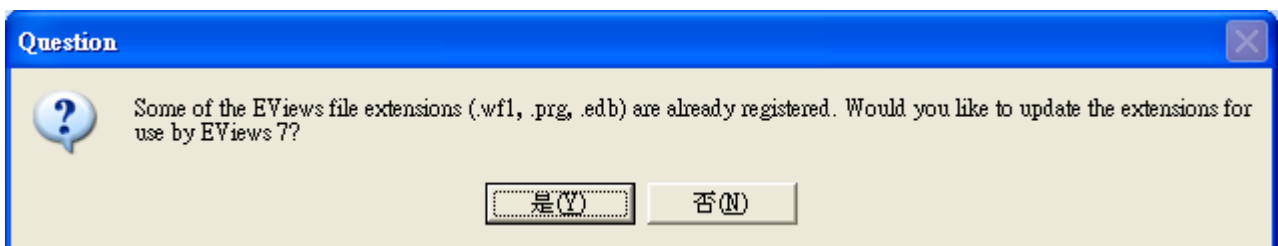
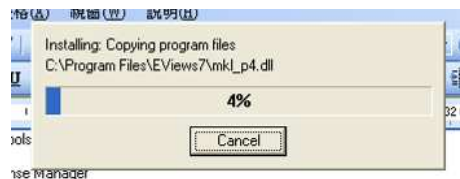


The screenshot shows the 'InstallShield Wizard' window with the 'License Management' tab selected. The window title is 'InstallShield Wizard'. The main heading is 'License Management' with a sub-heading 'Provide information on your EViews Concurrent Use License'. Below this, there is a paragraph: 'Please enter information on the Primary License to use with this copy of EViews.' There are two sections of input fields: 'License Server Information' with 'Enter the name or address of the License Server host computer:' containing '192.168.0.101' and 'Enter the Port on which License Server communicates:' containing '25750'; and 'License Information' with 'Enter the License Group to use with this copy of EViews:' containing 'EViews7'. At the bottom, there are three buttons: '< Back', 'Next >', and 'Cancel'.

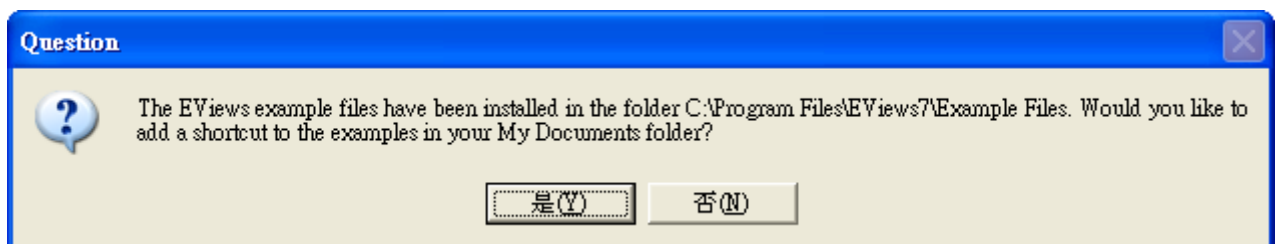
確認是否有另一台 license server，可在此點選”是(Y)”以指定另一台 Server 之 IP，

若無第二台 Server 請點選”否(N)”

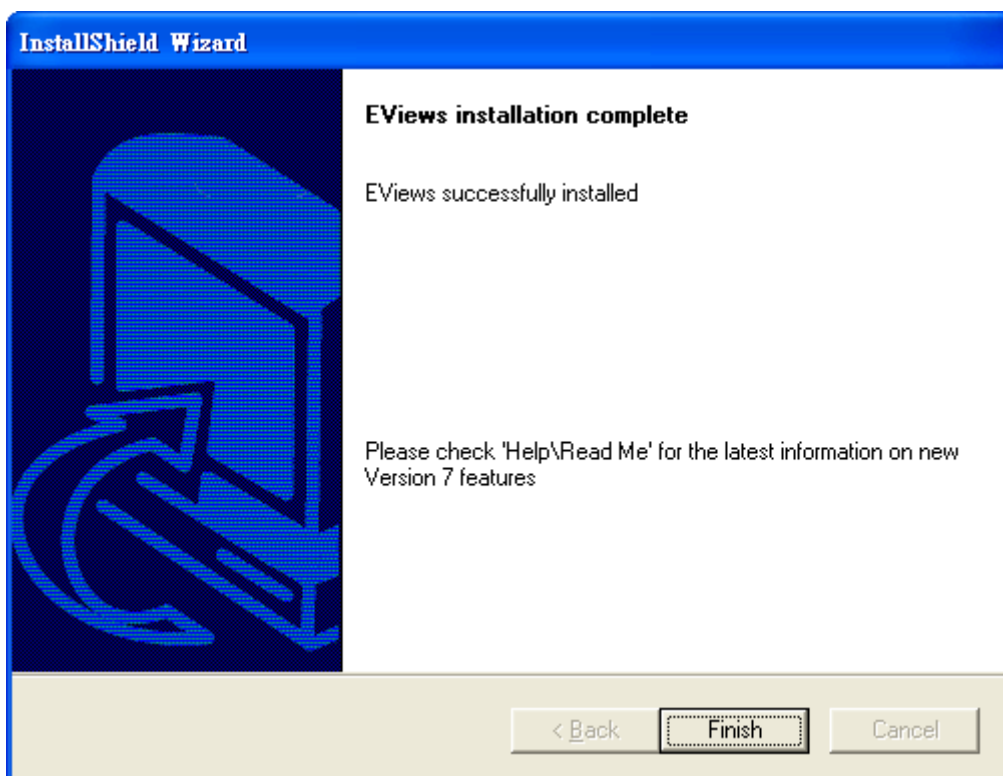
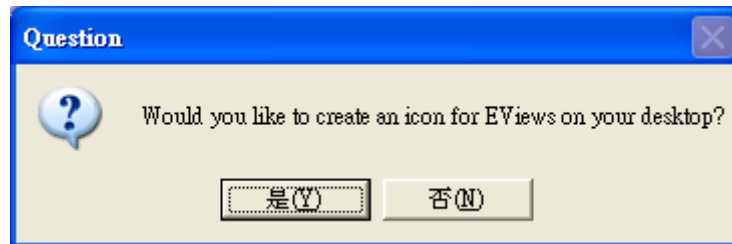




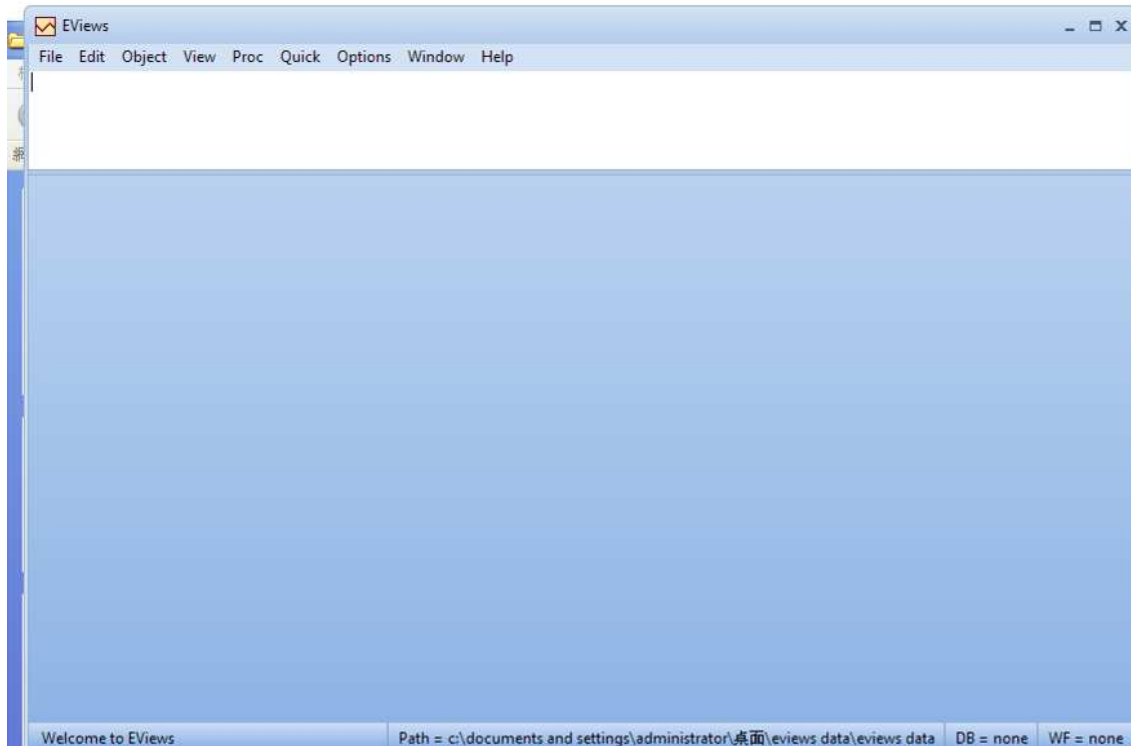
是否在“我的文件夾”中建立 Example File 的捷徑



是否在桌面建立捷徑



## Step5. 執行 EViews



注意事項: EViews 7 License Manager 每日會透過網路自動線上更新，若是 Server 端沒有長期連接網路請洽詢吳青公司。網路版(Concurrent License)需要每年購買系統維護(Annual Renewal)，否則之後 EViews 原廠不負責任何技術支援，包括 License Manager 重新安裝註冊。若有疑問，歡迎洽詢吳青公司。