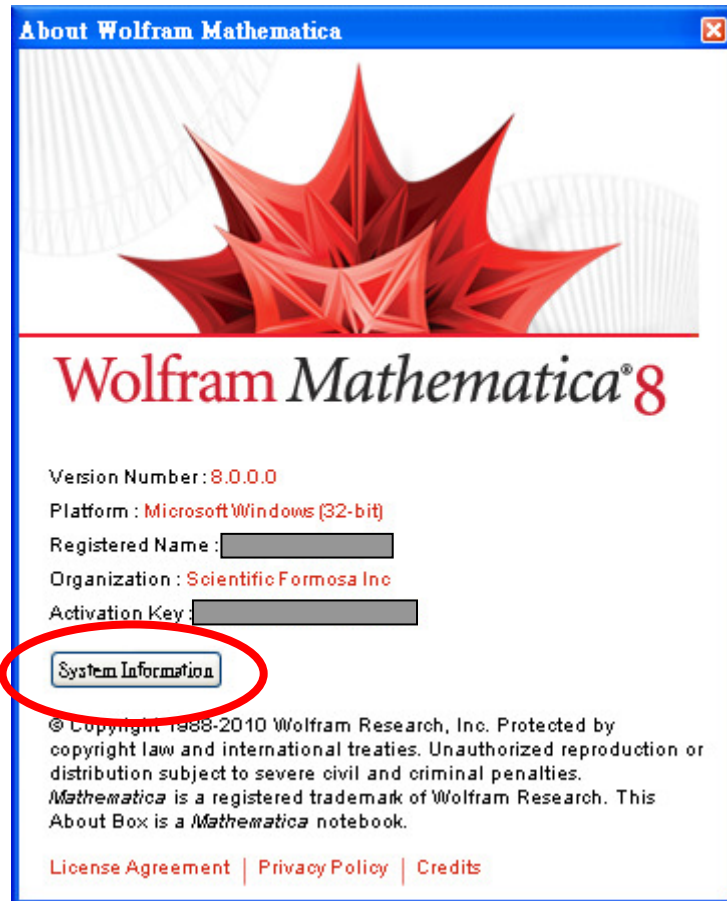
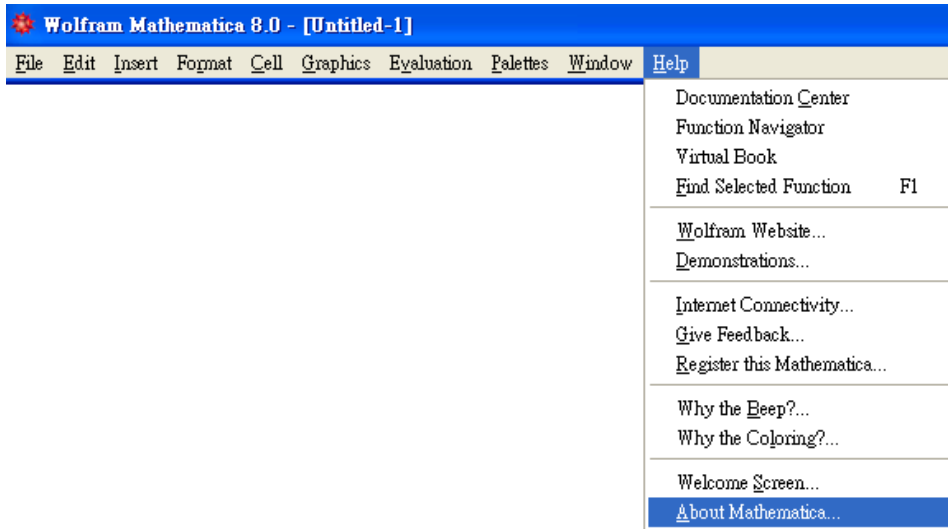


【方法 1】



Mathematica System Information

Kernel Front End Links Parallel Devices Network

Version 8.0 for Microsoft Windows (32-bit) (November 7, 2010)
 Release ID 8.0.0.0 (1803527, 1802938)
 Patch Level 0
 Activation Key [REDACTED]
Machine ID 6102-24501-70756
 User Name [REDACTED]
 Machine Name [REDACTED]
 Machine Domains [REDACTED]
 License Server [REDACTED]
 Max License Processes 8
 License Expiration Date Fri 21 Jan 2011 00:00:00

Machine Type PC
 Operating System Windows
 Processor Type x86

Language Chinese Traditional
 Character Encoding CP950
 System Character Encoding CP950
 Time Zone 8.

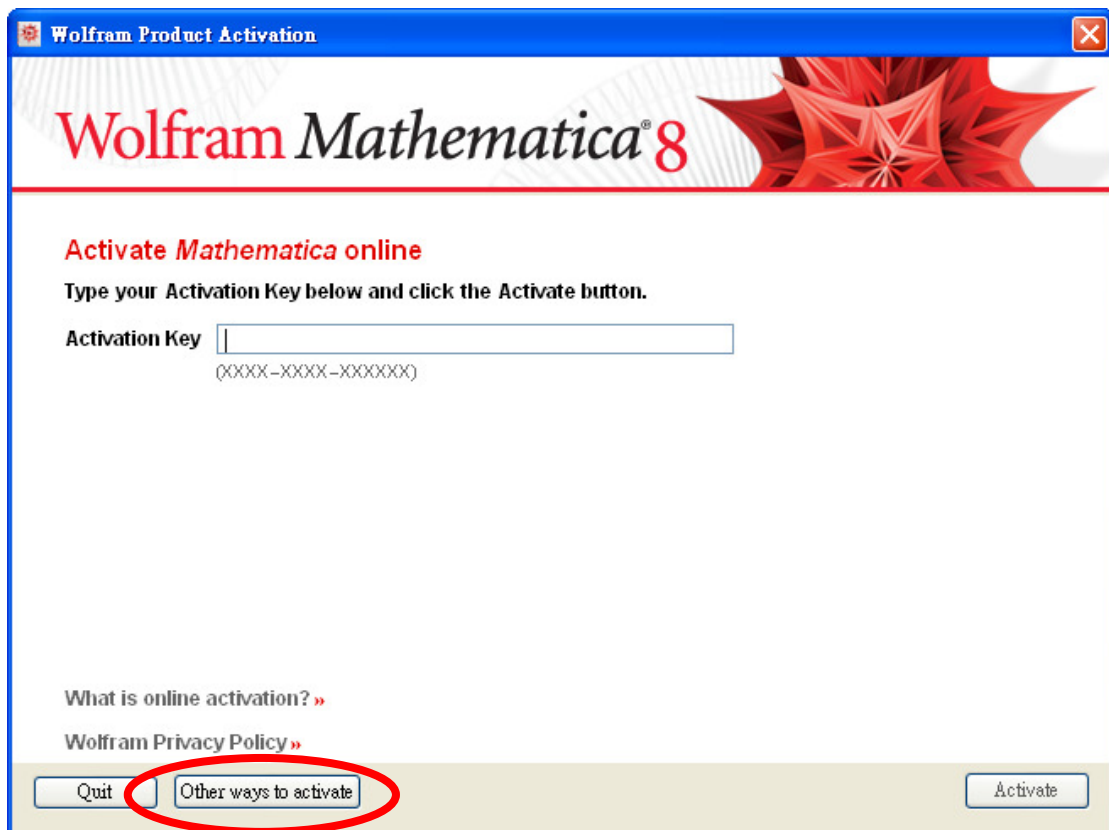
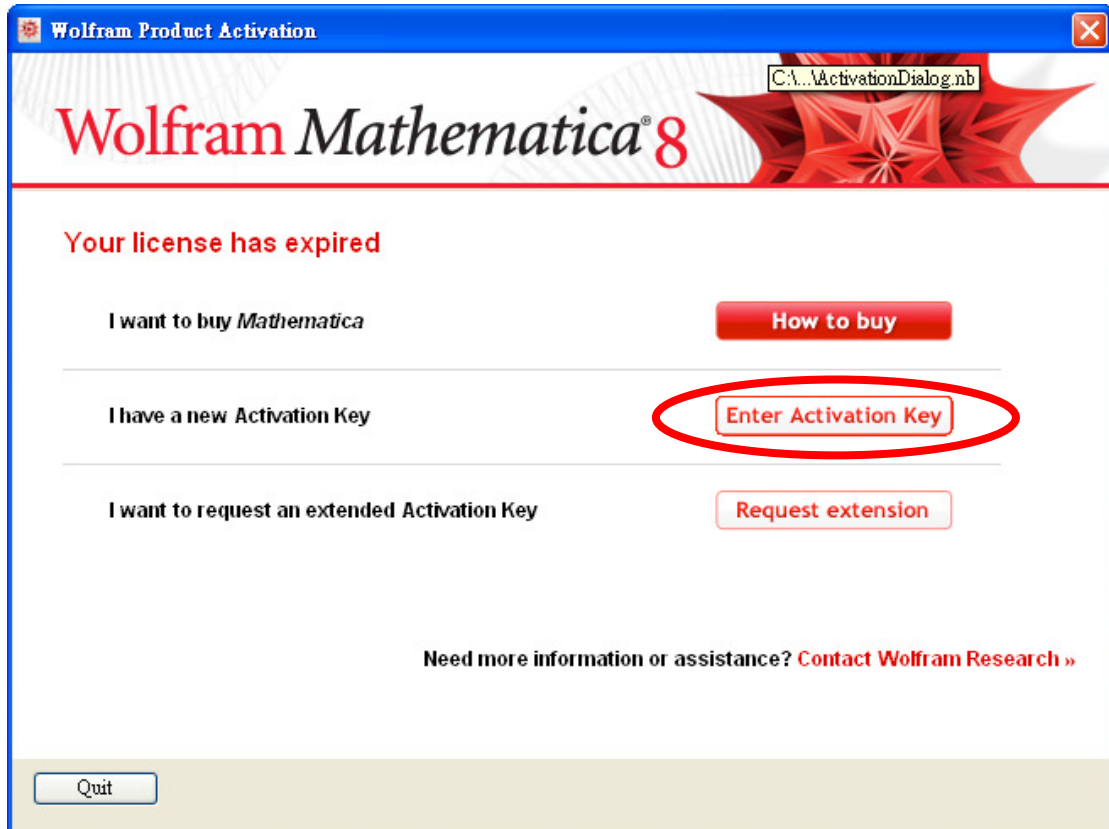
Creation Date Sun 7 Nov 2010 21:52:00
 Installation Directory C:\Program Files\Wolfram Research\Mathematica\8.0 >>
 Initialization Files Loaded ▶ 6 files

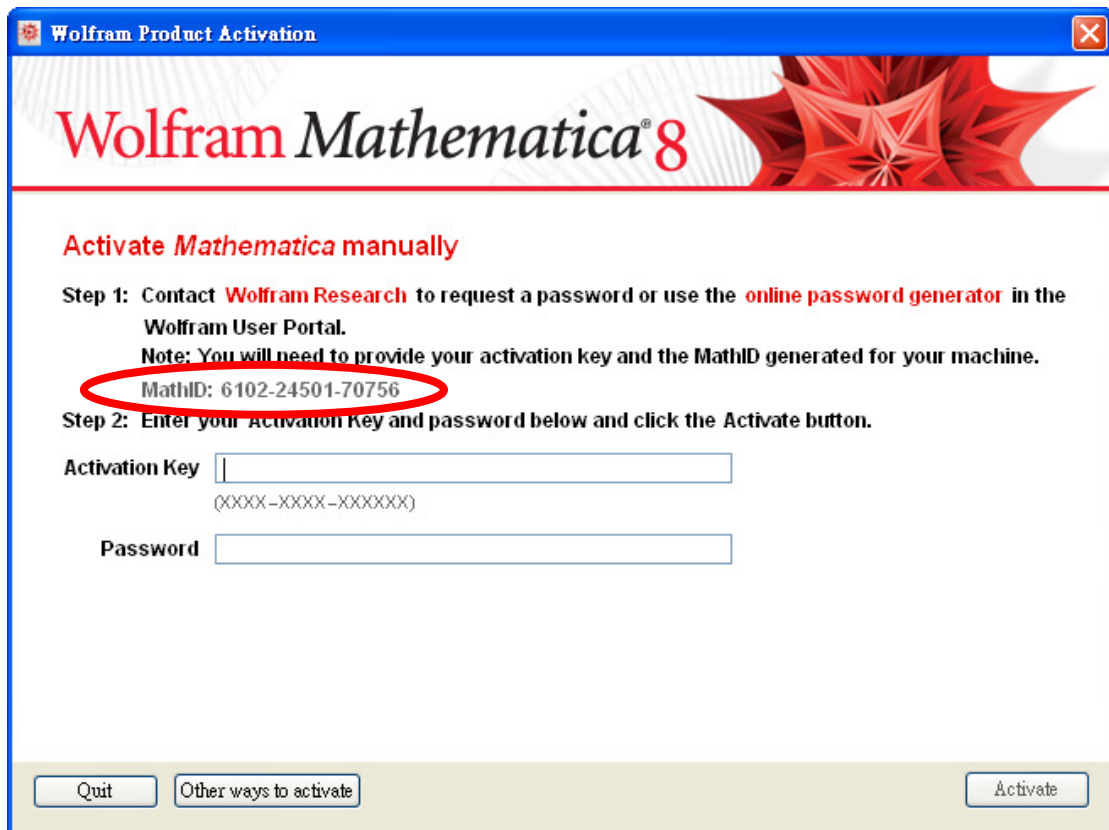
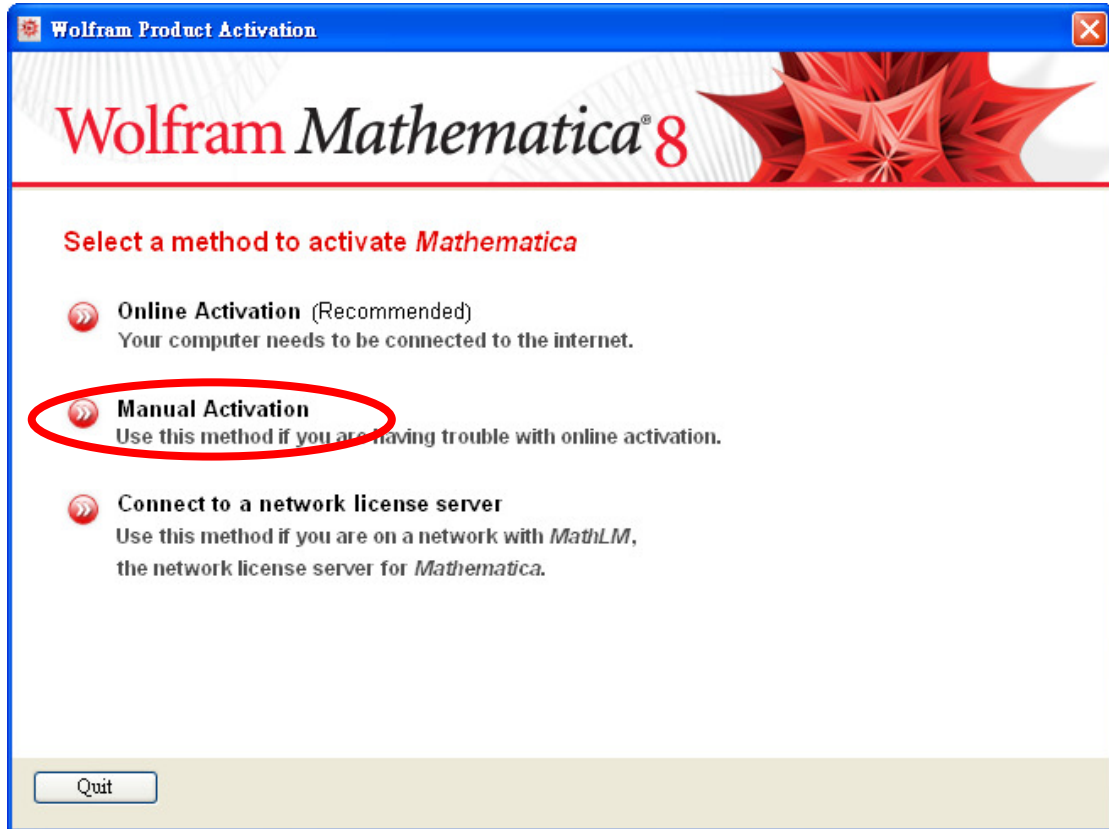
- ▶ Directories
- ▶ Packages & Files
- ▶ Streams
- ▶ MathLink
- ▶ External Compilers
- ▶ Advanced

Benchmark with *MathematicaMark* ...

Copy

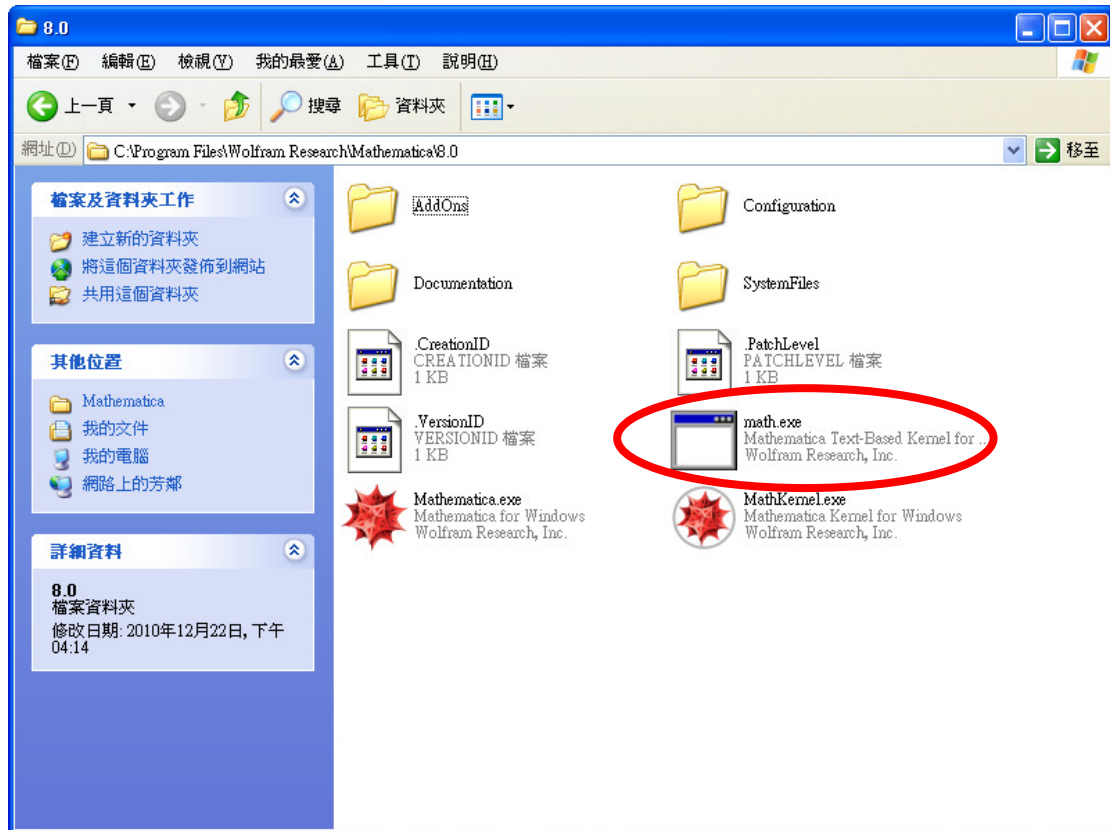
【方法 2】



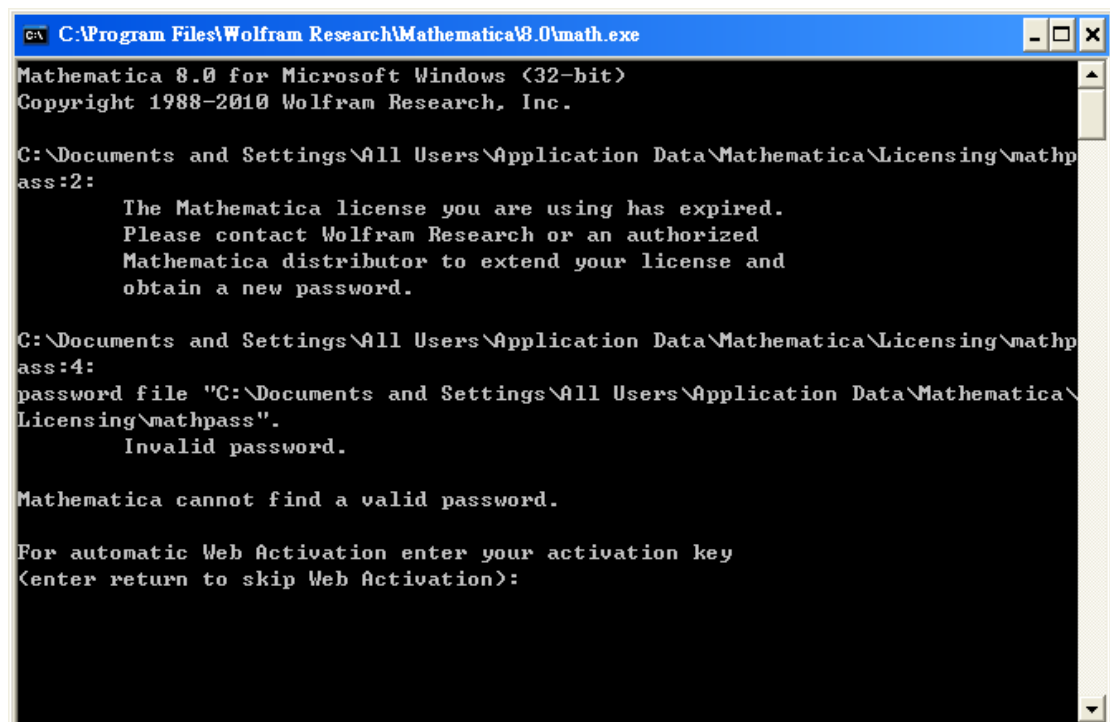


【方法 3】

執行 Mathematica 安裝資料夾下的『math.exe』



按下『enter 鍵』跳過網路註冊



```
C:\Program Files\Wolfram Research\Mathematica\8.0\math.exe
Licensing\mathpass".
    Invalid password.

Mathematica cannot find a valid password.

For automatic Web Activation enter your activation key
(enter return to skip Web Activation):

A password entry for a network license server was found,
but no license was returned. The license server may not be
responding, or no licenses are available from the server.
You may need to contact your system administrator to
start the license server, or wait until a license is
available.

Machine name: sfi-12345
MathID: 6102-24501-70756

You will need a valid activation key and password in order
to proceed. Go to http://user.wolfram.com to
register your activation key and obtain the password.

Enter your Activation key [format xxxx-xxxx-xxxxxx]:

Enter your password:
```