

Origin/OriginPro 網路版安裝步驟

Origin/OriginPro8 網路版安裝前注意事項:

1. 選取一台適當之主機當 server 並安裝由 OriginLab 提供的 FLEXnet Server.
2. 安裝成功後由 FLEXnet Server 進行上線數量的控管
3. Client 端電腦無安裝次數限制,但需要確定 client 端與 server 端有連線(Ping IP)
4. 支援系統:
 - Windows NT, 2000, 2003, XP or Vista
 - Sun SPARC Solaris 10
 - Fedora 8
 - Red Hat Enterprise Linux 4.6

開始安裝(下列步驟皆假設 server 端為 Windows 系統並可連接網路) :

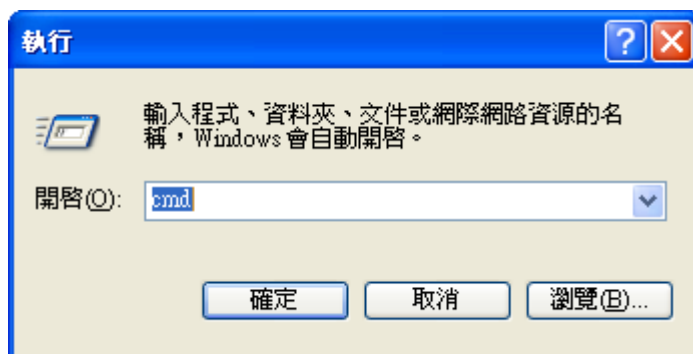
1. server 端下載 FLEXnet Server

確定 License 號碼為 Concurrent License 後(XXXXX-2XXX-XXXXXXX or XXXXX-3XXX-XXXXXXX.), 進入 <http://www.originlab.com/index.aspx?s=9&pid=1051>, 依照 server 系統下載並安裝 FLEXnet Server 應用程式

2. 從 OriginLab 原廠網站索取 License File

(1) 確認 server 端 host name/IP 位址

開始>執行, 開啓:cmd



於指令列 key 入: ipconfig/all, 記下 host name 與 physical address

```
Microsoft Windows XP [Version 5.1.2600]
(C) Copyright 1985-2001 Microsoft Corp.

C:\Documents and Settings\user>ipconfig/all

Windows IP Configuration

Host Name . . . . . : host
Primary Dns Suffix . . . . . : networkname.com
Node Type . . . . . : Hybrid
IP Routing Enabled. . . . . : No
WINS Proxy Enabled. . . . . : No
DNS Suffix Search List. . . . . : networkname.com
                                networkname.com

Ethernet adapter Local Area Connection:

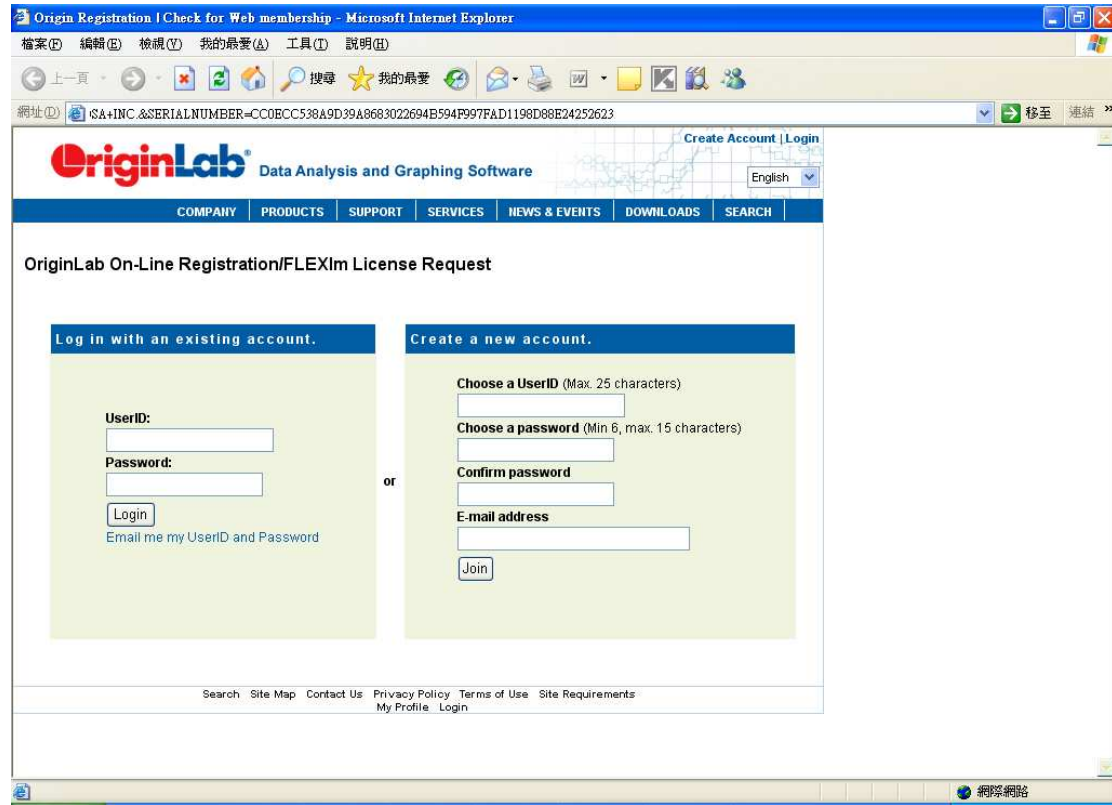
Connection-specific DNS Suffix . . : networkname.com
Description . . . . . : Intel(R) PRO/100 UE Network Connecti
on
Physical Address. . . . . : 11-11-11-11-11-11
Dhcp Enabled. . . . . : Yes
Autoconfiguration Enabled . . . . : Yes
IP Address. . . . . : 00.00.00.00
Subnet Mask . . . . . : 111.111.111.11
```

(2) 原廠網站索取 license file

登入 Origin 的網頁(<http://www.originlab.com/>) 左下角有個 Resource 的框格
請點選 “FLEXIm License/Register” 進行 License 註冊



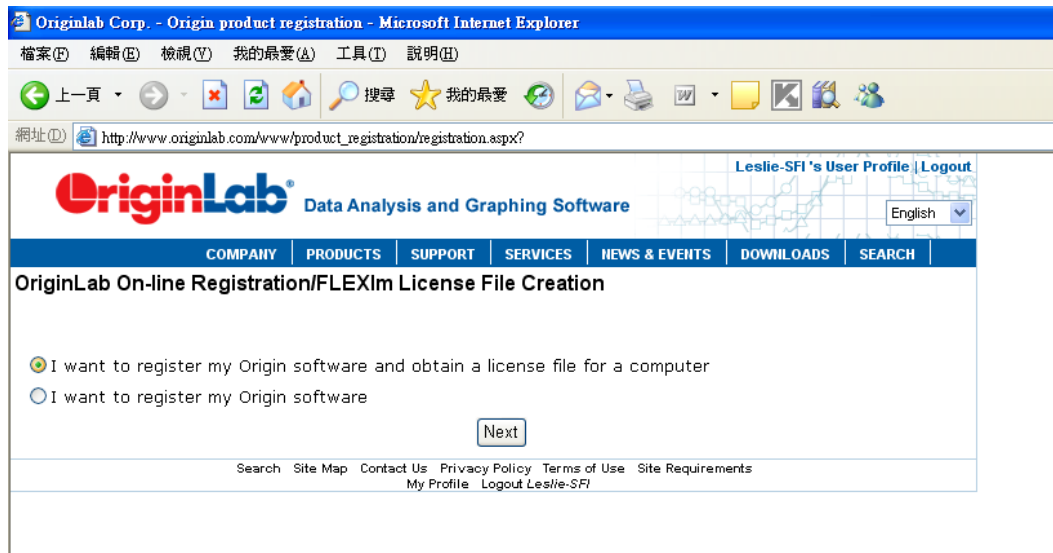
若已有帳號可直接登入; 否則請 **Create a new account.**



Create a User ID: User ID 和 Password 請自行設定
 (注意: email 請輸入當初購買填寫給予昊青公司的 email.)



選取: I want to register my origin software and obtain a license file for a computer.



OriginLab Corp. - Origin product registration - Microsoft Internet Explorer

檔案(F) 編輯(E) 檢視(V) 我的最愛(A) 工具(T) 說明(H)

← 上一頁 · → · × · ↻ · 🏠 · 🔍 搜尋 · ⭐ 我的最愛 · 🔄 · 📧 · 🖨 · 📄 · 📁 · 📂 · 📅 · 📆 · 📇 · 📈 · 📉 · 📊 · 📋 · 📌 · 📍 · 📎 · 📏 · 📐 · 📑 · 📒 · 📓 · 📔 · 📕 · 📖 · 📗 · 📘 · 📙 · 📚 · 📛 · 📜 · 📝 · 📞 · 📟 · 📠 · 📡 · 📢 · 📣 · 📤 · 📥 · 📦 · 📧 · 📨 · 📩 · 📪 · 📫 · 📬 · 📭 · 📮 · 📯 · 📰 · 📱 · 📲 · 📳 · 📴 · 📵 · 📶 · 📷 · 📸 · 📹 · 📺 · 📻 · 📼 · 📽 · 📾 · 📿 · 📠 · 📡 · 📢 · 📣 · 📤 · 📥 · 📦 · 📧 · 📨 · 📩 · 📪 · 📫 · 📬 · 📭 · 📮 · 📯 · 📰 · 📱 · 📲 · 📳 · 📴 · 📵 · 📶 · 📷 · 📸 · 📹 · 📺 · 📻 · 📼 · 📽 · 📾 · 📿

網址(1) http://www.originlab.com/www/product_registration/registration.aspx?

OriginLab® Data Analysis and Graphing Software Leslie-SFI's User Profile | Logout English

COMPANY PRODUCTS SUPPORT SERVICES NEWS & EVENTS DOWNLOADS SEARCH

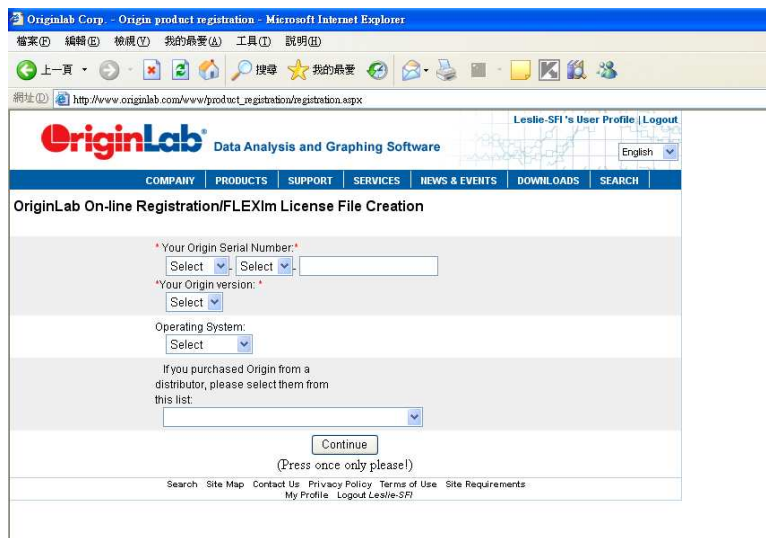
OriginLab On-line Registration/FLEXIm License File Creation

I want to register my Origin software and obtain a license file for a computer
 I want to register my Origin software

Next

Search Site Map Contact Us Privacy Policy Terms of Use Site Requirements
 My Profile Logout Leslie-SFI

依步驟輸入相關資料: SN#, Origin Version... Distributor(Scientific Formosa Inc.)



OriginLab Corp. - Origin product registration - Microsoft Internet Explorer

檔案(F) 編輯(E) 檢視(V) 我的最愛(A) 工具(T) 說明(H)

← 上一頁 · → · × · ↻ · 🏠 · 🔍 搜尋 · ⭐ 我的最愛 · 🔄 · 📧 · 🖨 · 📄 · 📁 · 📂 · 📅 · 📆 · 📇 · 📈 · 📉 · 📊 · 📋 · 📌 · 📍 · 📎 · 📏 · 📐 · 📑 · 📒 · 📓 · 📔 · 📕 · 📖 · 📗 · 📘 · 📙 · 📚 · 📛 · 📜 · 📝 · 📞 · 📟 · 📠 · 📡 · 📢 · 📣 · 📤 · 📥 · 📦 · 📧 · 📨 · 📩 · 📪 · 📫 · 📬 · 📭 · 📮 · 📯 · 📰 · 📱 · 📲 · 📳 · 📴 · 📵 · 📶 · 📷 · 📸 · 📹 · 📺 · 📻 · 📼 · 📽 · 📾 · 📿

網址(1) http://www.originlab.com/www/product_registration/registration.aspx

OriginLab® Data Analysis and Graphing Software Leslie-SFI's User Profile | Logout English

COMPANY PRODUCTS SUPPORT SERVICES NEWS & EVENTS DOWNLOADS SEARCH

OriginLab On-line Registration/FLEXIm License File Creation

Your Origin Serial Number:

Select Select

*Your Origin version: *

Select

Operating System:

Select

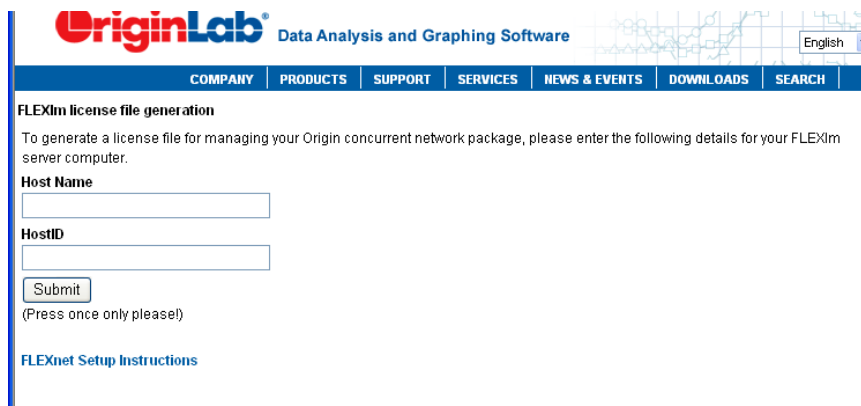
If you purchased Origin from a distributor, please select them from this list:

Continue

(Press once only please!)

Search Site Map Contact Us Privacy Policy Terms of Use Site Requirements
 My Profile Logout Leslie-SFI

輸入 Server 端電腦之 Host Name 與 Host ID



OriginLab® Data Analysis and Graphing Software English

COMPANY PRODUCTS SUPPORT SERVICES NEWS & EVENTS DOWNLOADS SEARCH

FLEXIm license file generation

To generate a license file for managing your Origin concurrent network package, please enter the following details for your FLEXIm server computer.

Host Name

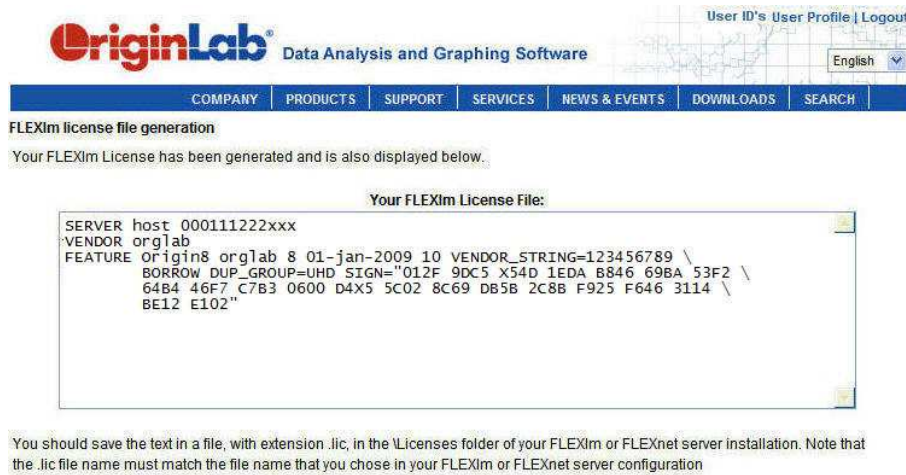
HostID

Submit

(Press once only please!)

FLEXnet Setup Instructions

系統自動 generate license file 內容.



OriginLab® Data Analysis and Graphing Software

COMPANY PRODUCTS SUPPORT SERVICES NEWS & EVENTS DOWNLOADS SEARCH

FLEXlm license file generation

Your FLEXlm License has been generated and is also displayed below.

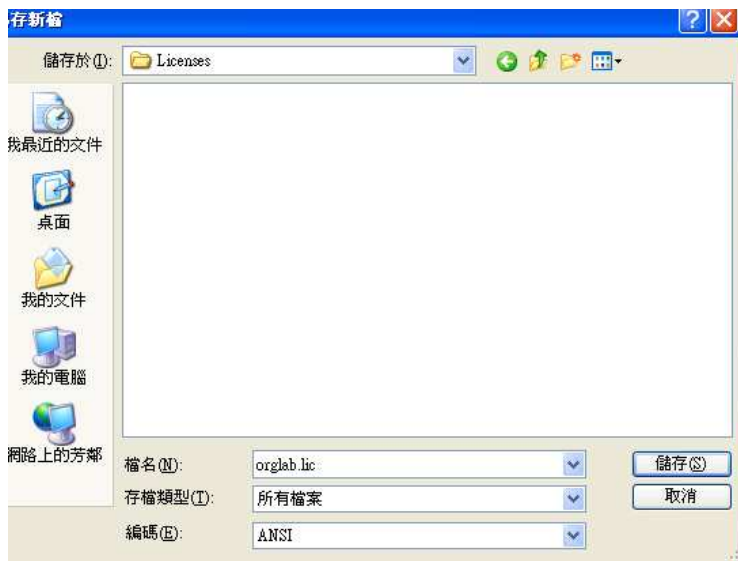
```

Your FLEXlm License File:
SERVER host 000111222xxx
VENDOR orglab
FEATURE Origin8 orglab 8 01-jan-2009 10 VENDOR_STRING=123456789 \
BORROW DUP_GROUP=UHD SIGN="012F 9DC5 X54D 1EDA B846 698A 53F2 \
64B4 46F7 C7B3 0600 D4X5 5C02 8C69 DB5B 2C8B F925 F646 3114 \
BE12 E102"
    
```

You should save the text in a file, with extension .lic, in the \Licenses folder of your FLEXlm or FLEXnet server installation. Note that the .lic file name must match the file name that you chose in your FLEXlm or FLEXnet server configuration

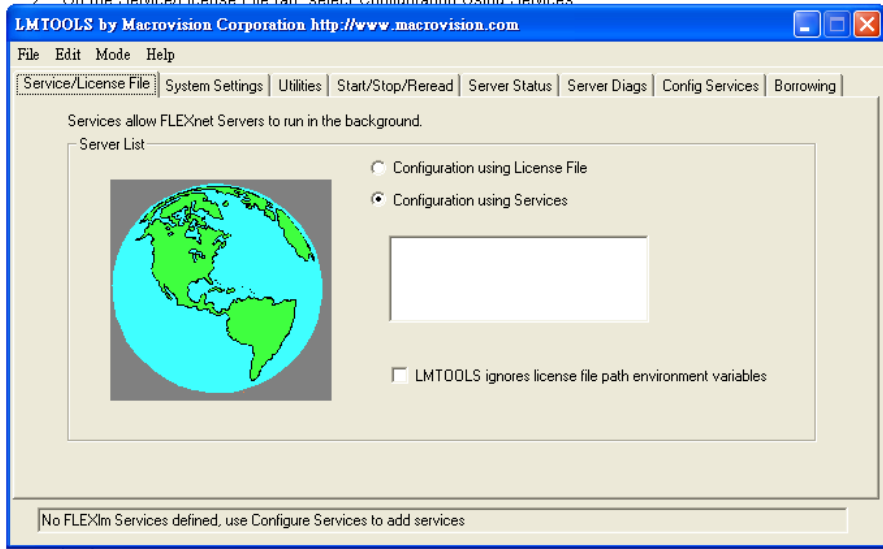
(3) Create 一個 Orglab.lic

開啓一個記事本(notepad), 將 FLEXlm License File 之內容 Copy 至此 notepad 中, 請勿隨意刪除、新增行數或更改其內容. 檔案>儲存檔案: orglab.lic, 檔案路徑: C:\Program Files\OriginLab\FLEXnet Server\Licenses(假設您 flexnet Server 安裝於 C 槽之 program file) 請注意檔案類型請選擇”所有檔案”.

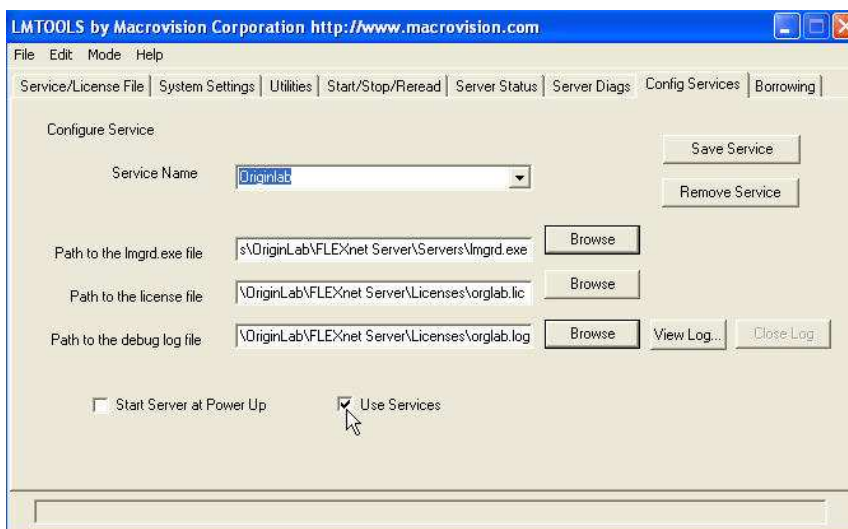


3. 設定 FLEXnet service

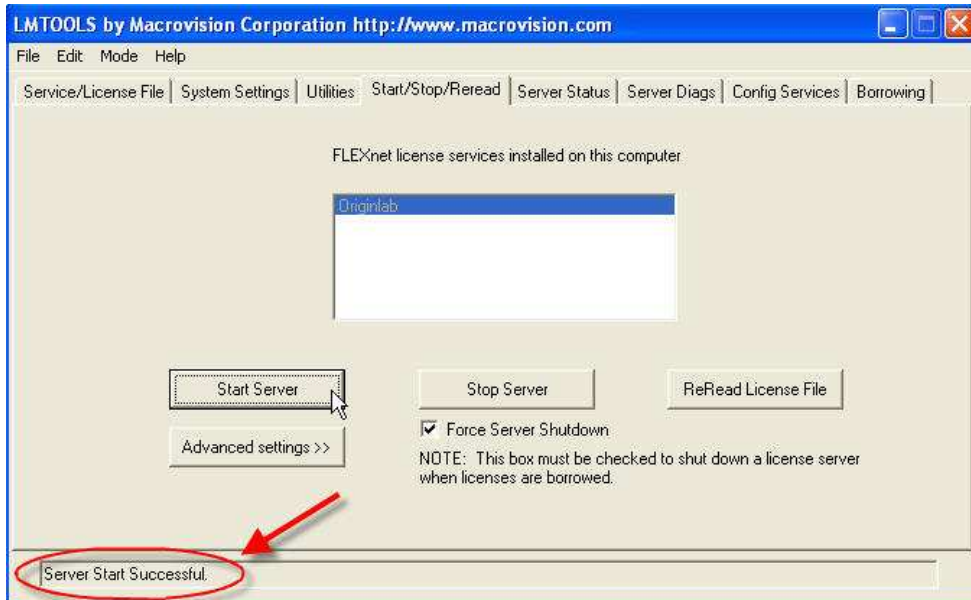
- (1) 開啓 LMTools (預設 C:\Program Files\OriginLab\FLEXnet Server\Tools)
- (2) Service/License File 選項, 請選擇 Configuration using Services



- (3) Config Services 選項, 在 Service Name 直接輸入 OriginLab
 Enter the path to the LMGRD.EXE file
 (example - C:\Program Files\FLEXnetServer\Servers\lmgrd.exe).
 Enter the Path to the license file
 (example - C:\Program Files\FLEXnetServer\Licenses\origlab.lic).
 Enter the Path to the debug log file
 (example - C:\Program Files\FLEXnetServer\Licenses\origlab.log).
 Note: The log file is created automatically when you specify a path and file name.
 勾選"Use Service"
 勾選" Start Server at Power Up"避免每次 server 開機皆需要重新啓動 service.



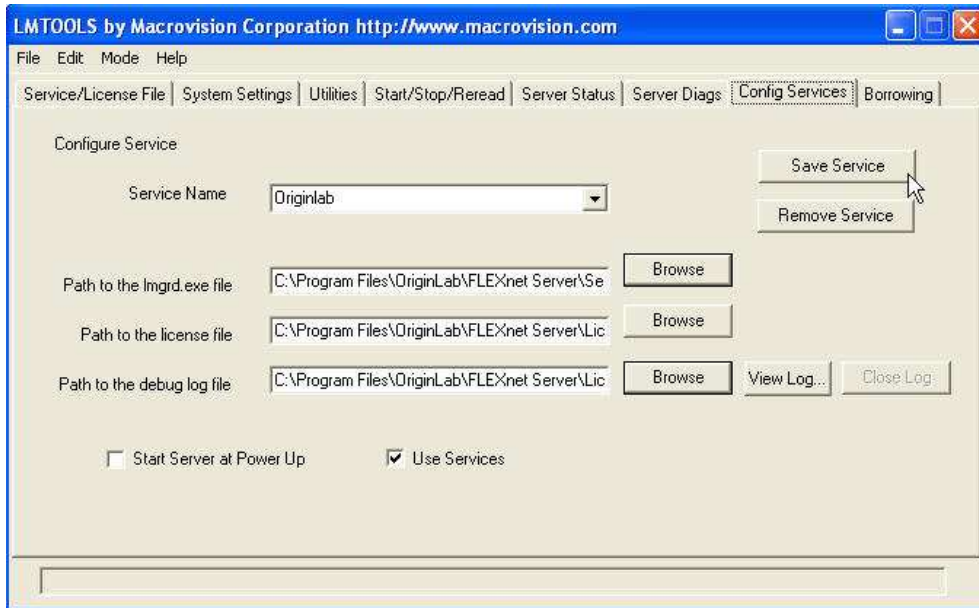
- (4) Start/Stop/Reread 選項, 此時會跳出是否儲存 service 的窗格,請選擇 yes. 勾選 Force Server Shutdown check box. 選取"Start Server". LMTOOLS 視窗左下角出現 "Server Start Successful"



- (5) Server Status 選項, 點選 Perform Status Enquiry. 下方窗格會出現目前 service 使用狀態.



(6) 確認目前狀態是否正確，選擇 **Config Services** 選項並且選取 **Save Service**.



4. Client 端電腦安裝

以管理者權限登入 client 電腦，直接以 install CD 安裝並輸入正確之序號.

開啓 origin, 在 license information 視窗直接輸入 server 之 IP, Port 留空白後 update 即可.

詳情請參考原廠安裝說明

http://wiki.originlab.com/~originla/wiki/index.php?title=Basic_Setup_Instructions